

Click to begin



Maitre'D®

2005 Setup Guidelines

P.O.S. Control Options



P.O.S. Control Options

[Click to continue](#)

This document will guide you through setting up P.O.S. Control Options in Maitre'D.

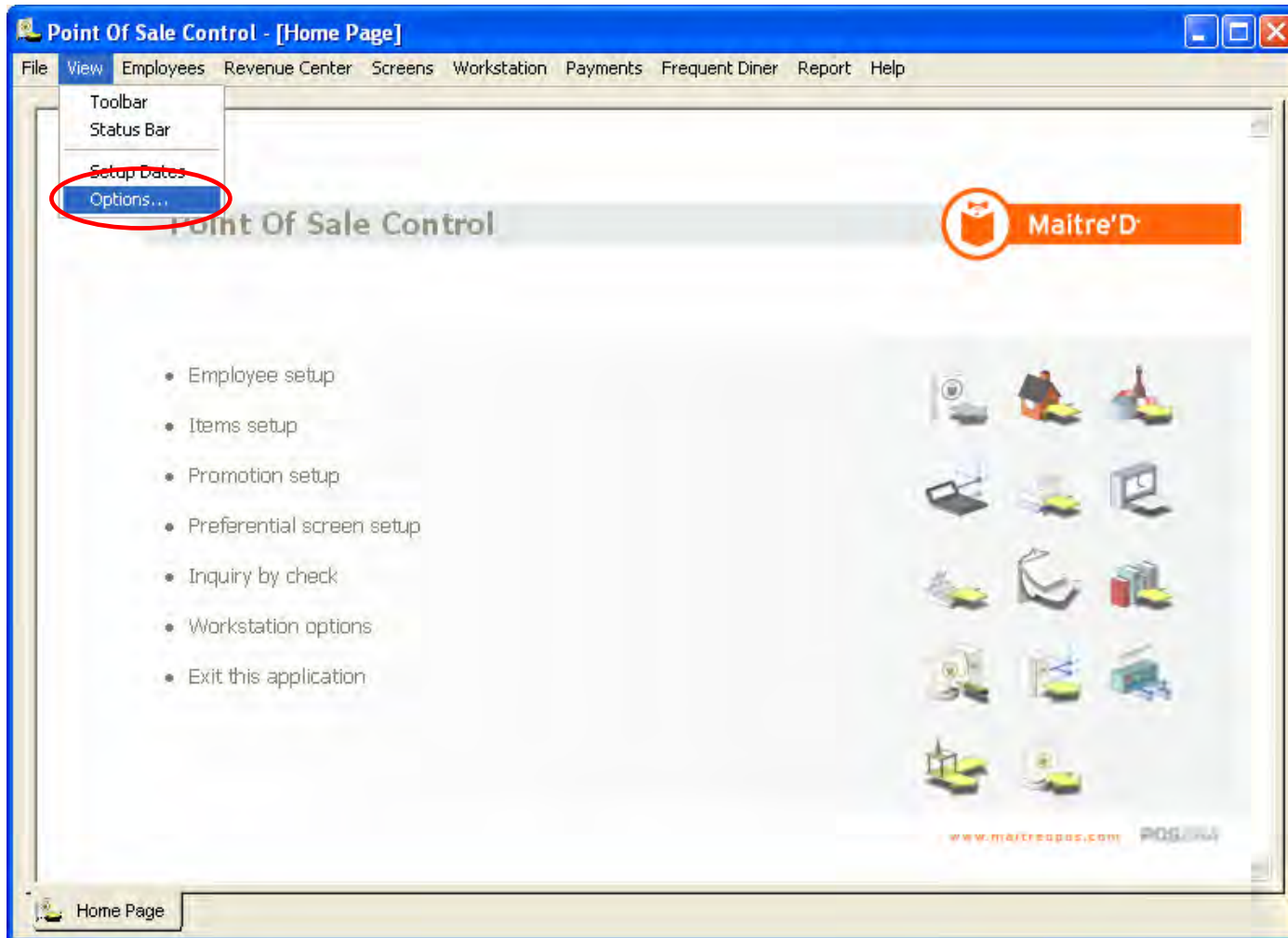
The P.O.S. Control options allow you to set up some basic functionalities and general behavior.



P.O.S. Control Options

Click to continue

In the P.O.S. Control module, click on View, then click on Options.





P.O.S. Control Options

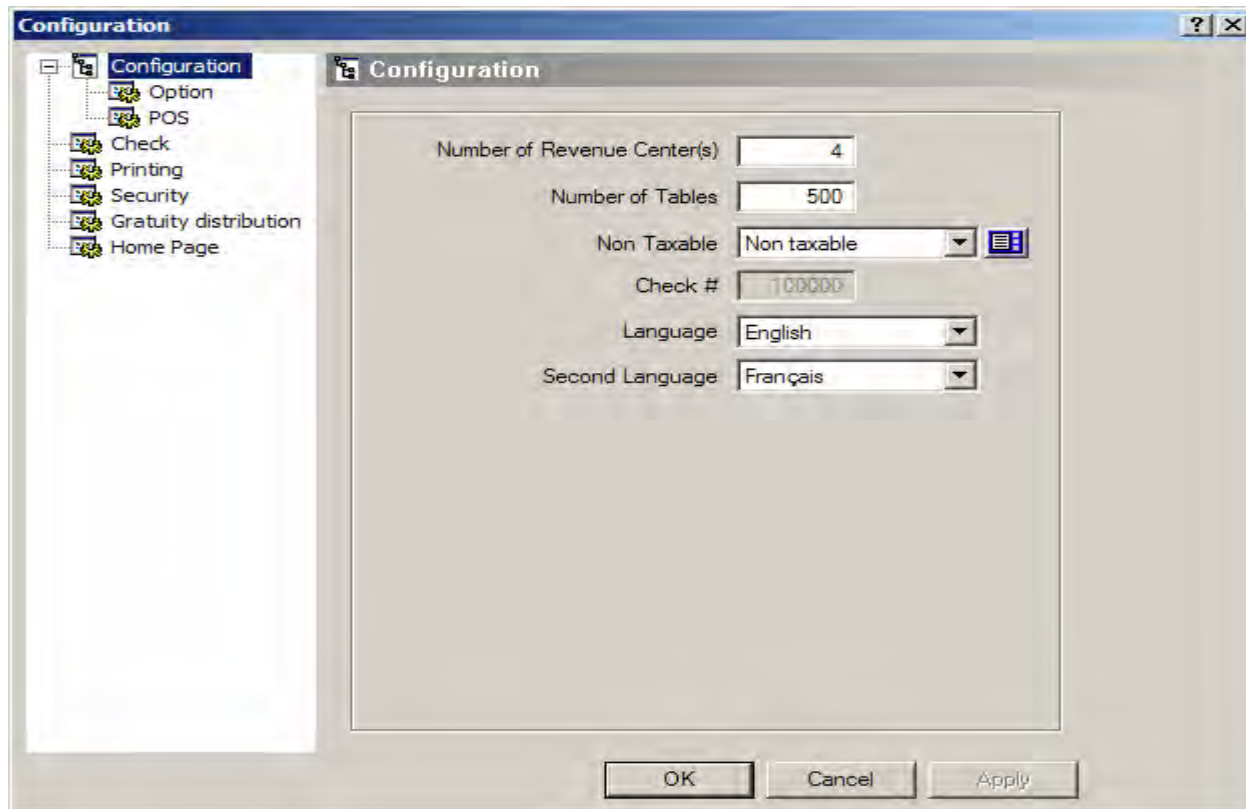
[Click to continue](#)

This is where the **Number Of Revenue Centers** is set.

In the **Number Of Tables** field enter the highest # of available tables and tabs in the restaurant that may be open at any given time.

The **Non Taxable** field allows to assign a replacement tax that can be applied on the check.

Note: For this to be available, you must also enable options in Employees' Configurations and Taxes Setup





P.O.S. Control Options

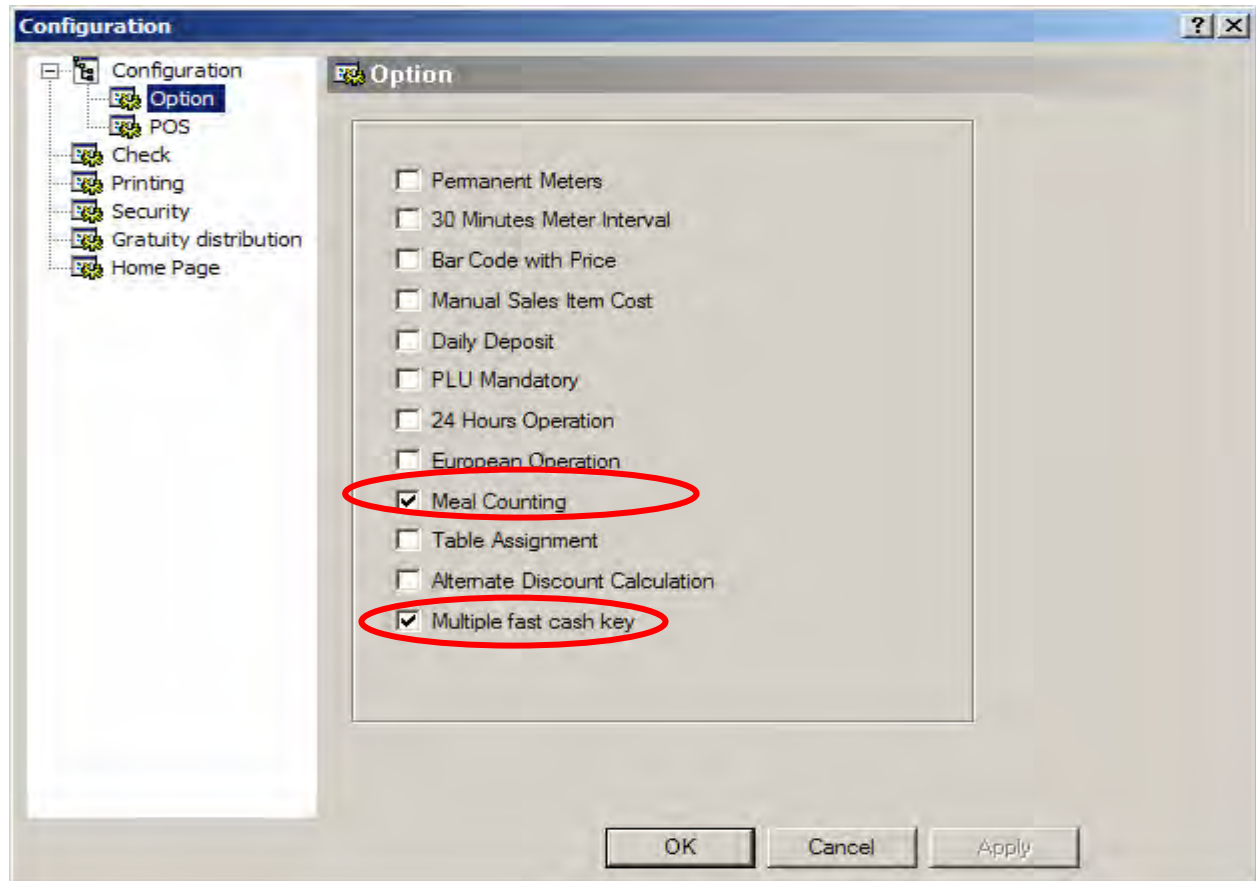
Click to continue

Enable **Meal Counting** to display the number of meals on the activity report.

Enable **Multiple Fast Cash Key** to allow multiple use of the Fast Cash keys.

-Note: **Table Assignment** activates the Floor Management module

Click on POS.





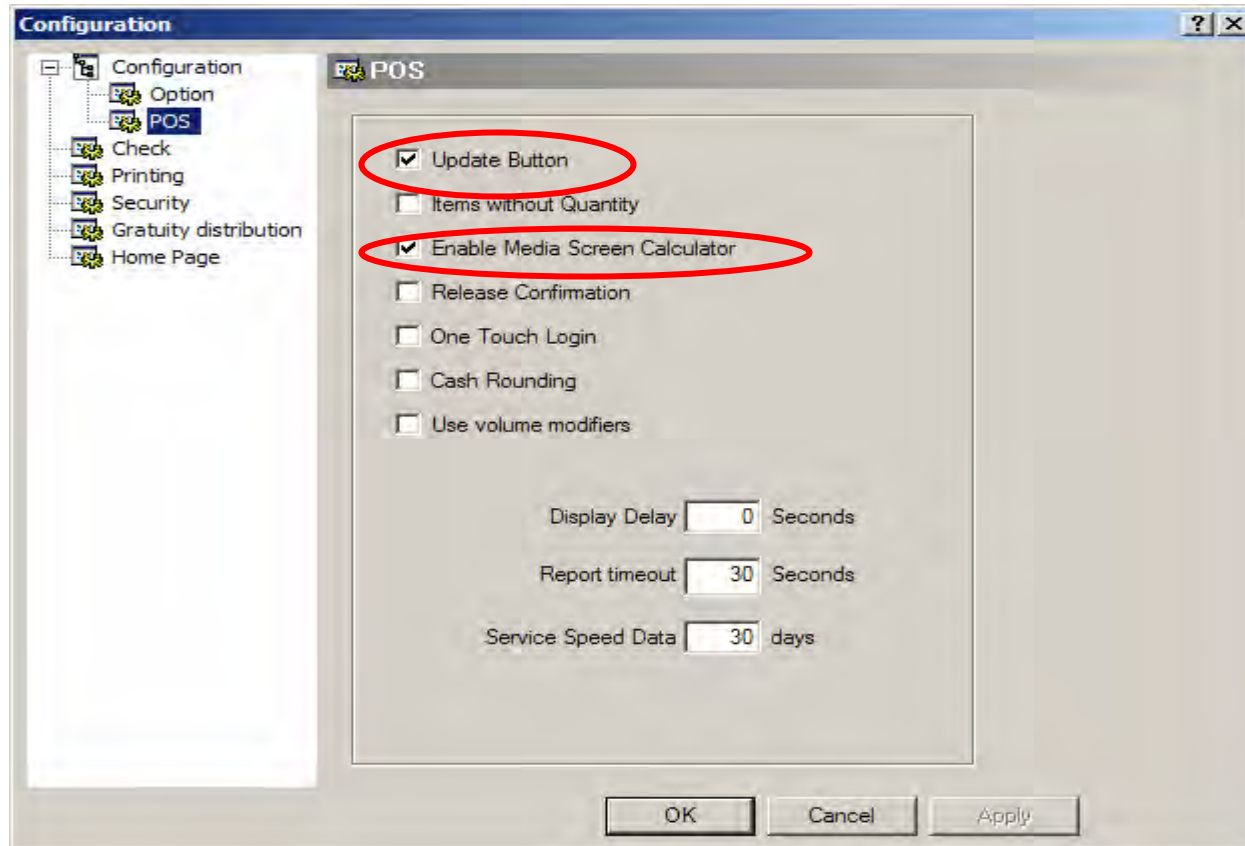
P.O.S. Control Options

Click to continue

Select the **Update Button** option to make it available on the workstation's main screen.

Note: The workstation also updates itself when a table is accessed.

Enable **Media Screen Calculator** to allow the use of the plus (+) and multiply (*) buttons on the media amount entry screen to use multiple instances of the same media type.





P.O.S. Control Options

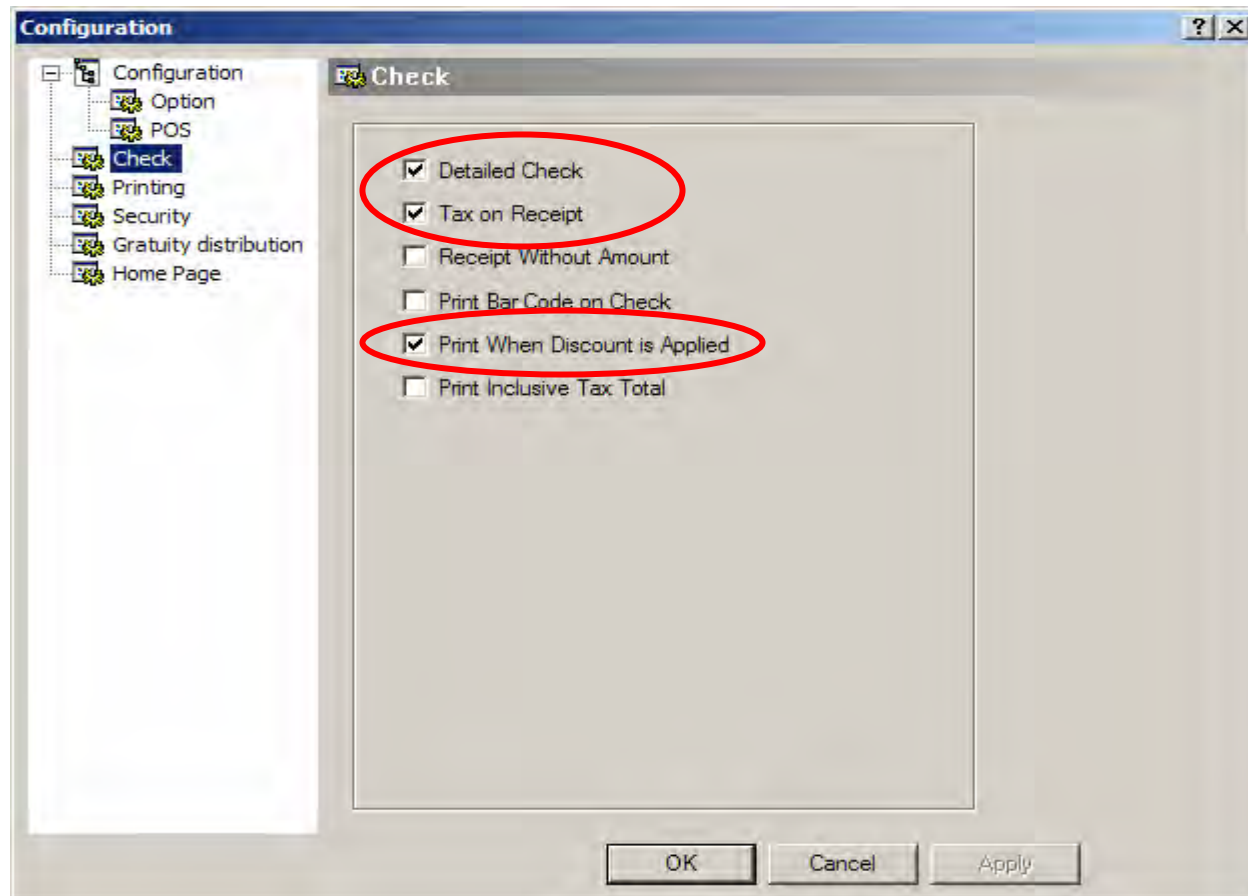
[Click to continue](#)

Enable the **Detailed Check** option to allow printing Total By Customer on a check with many guests.

Enable the **Tax on Receipt** option to print taxes on the receipt.

Selecting **Print When Discount is Applied** will force the printout of a receipt every time a discount is applied to a check

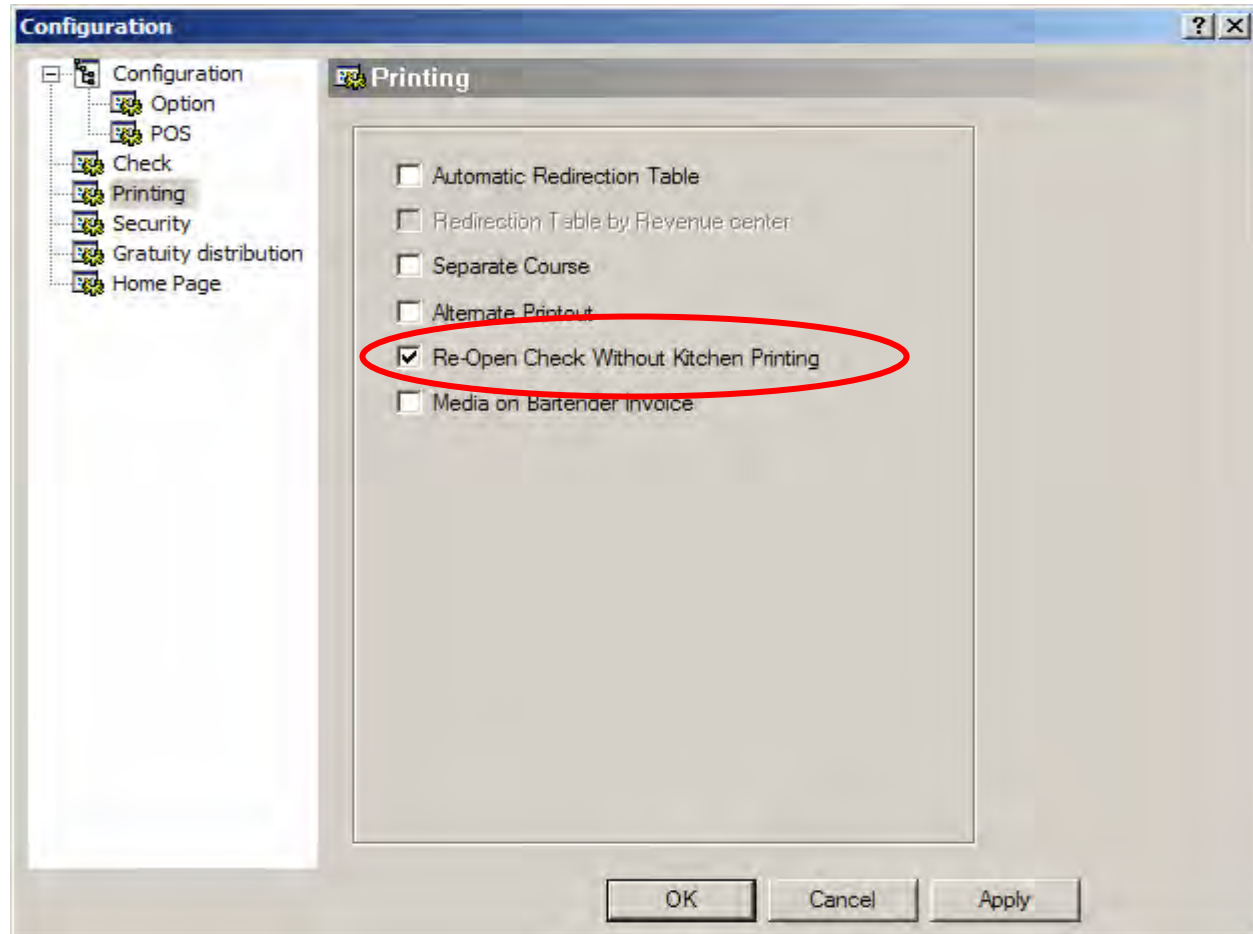
Click on Printing.





Enable **Re-open check w/out Kitchen printing** to disable the printing of previously ordered items in the kitchen when reopening a closed check.

Click on Security.

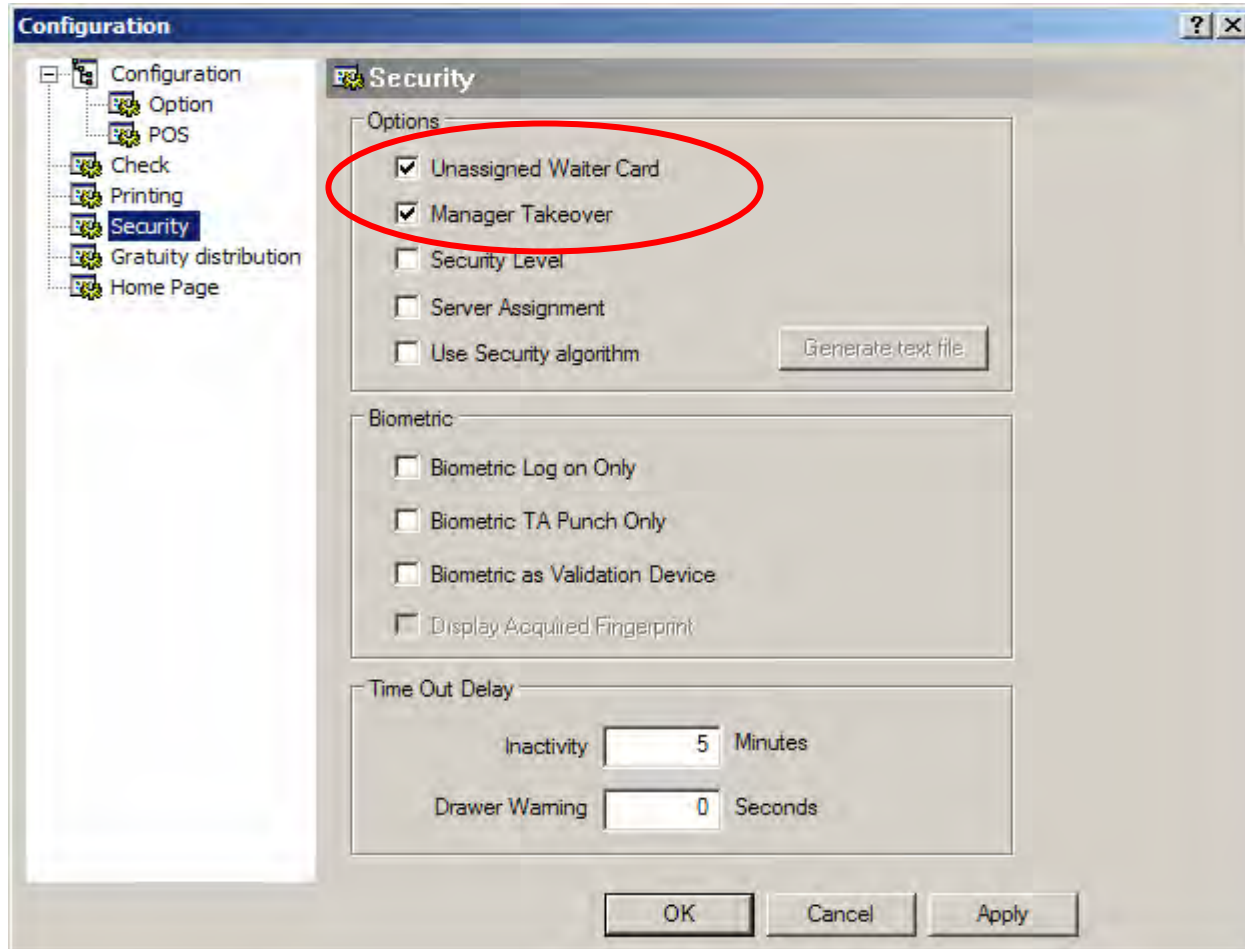




P.O.S. Control Options

[Click to continue](#)

Enable **Unassigned Waiter Card** to allow use of the Maitre'd magnetic strip cards
Enable the **Manager Takeover** option to allow managers to quickly take control of a table already opened by a server with a password only, instead of exiting and re-entering the table.

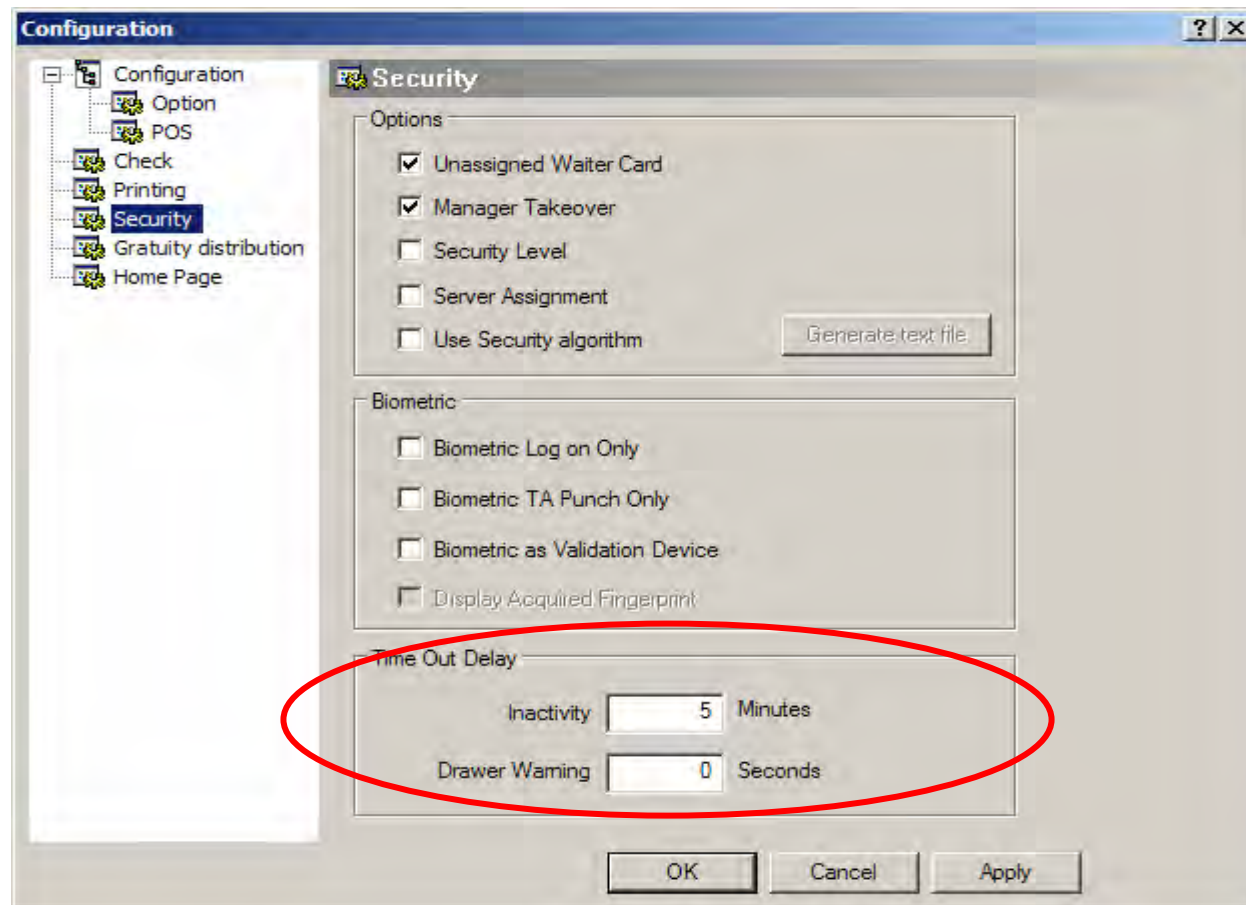


P.O.S. Control Options

[Click to continue](#)

Enter the **Inactivity delay** before the workstation exits a table a server has left open too long, and comes back to the server login screen. Leaving this field at 0 disables this function.

Click on Gratuity Distribution.



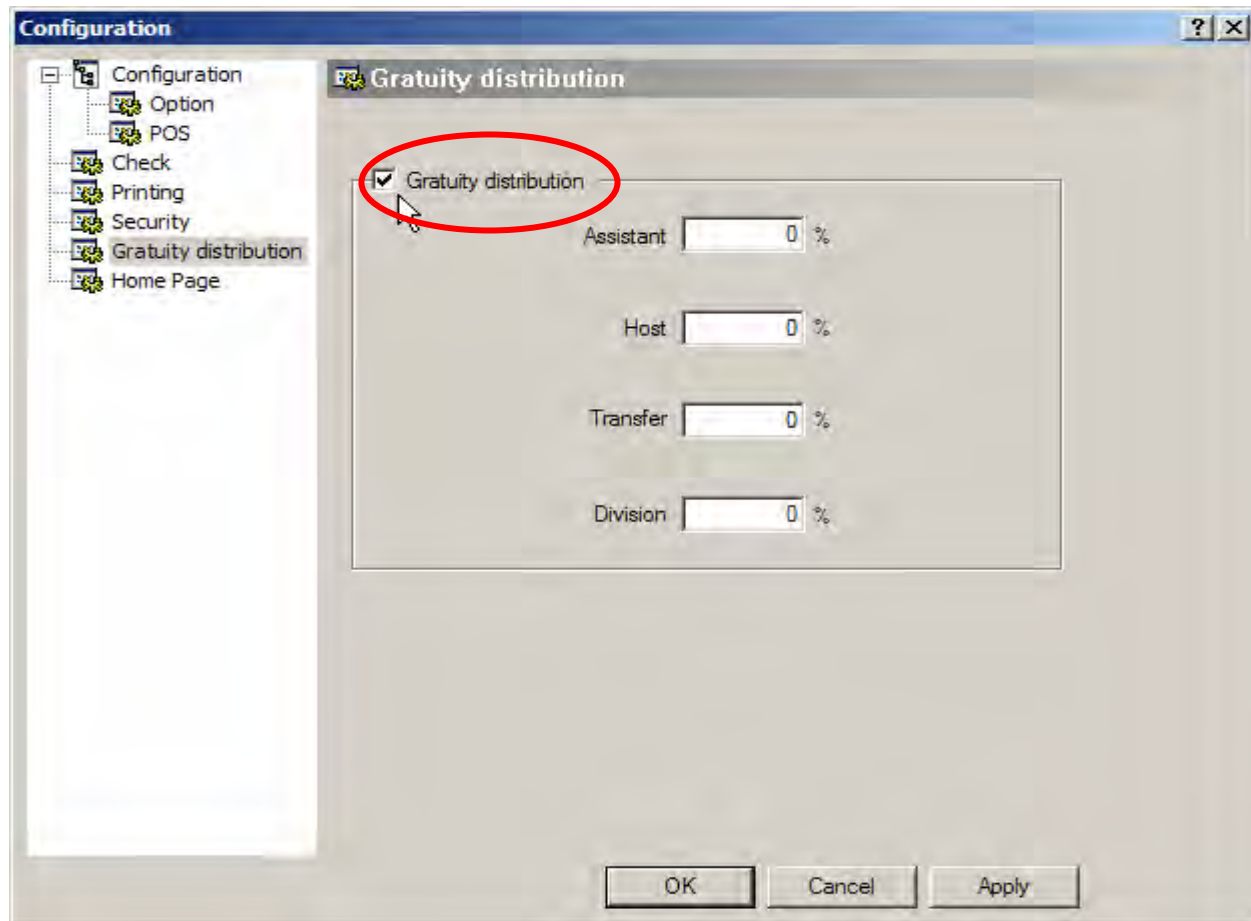


P.O.S. Control Options

Click to continue

Enable the **Gratuity Distribution** option and enter percentages to print portions of tips owned to other employees on the server's reading.

Click on Home Page.



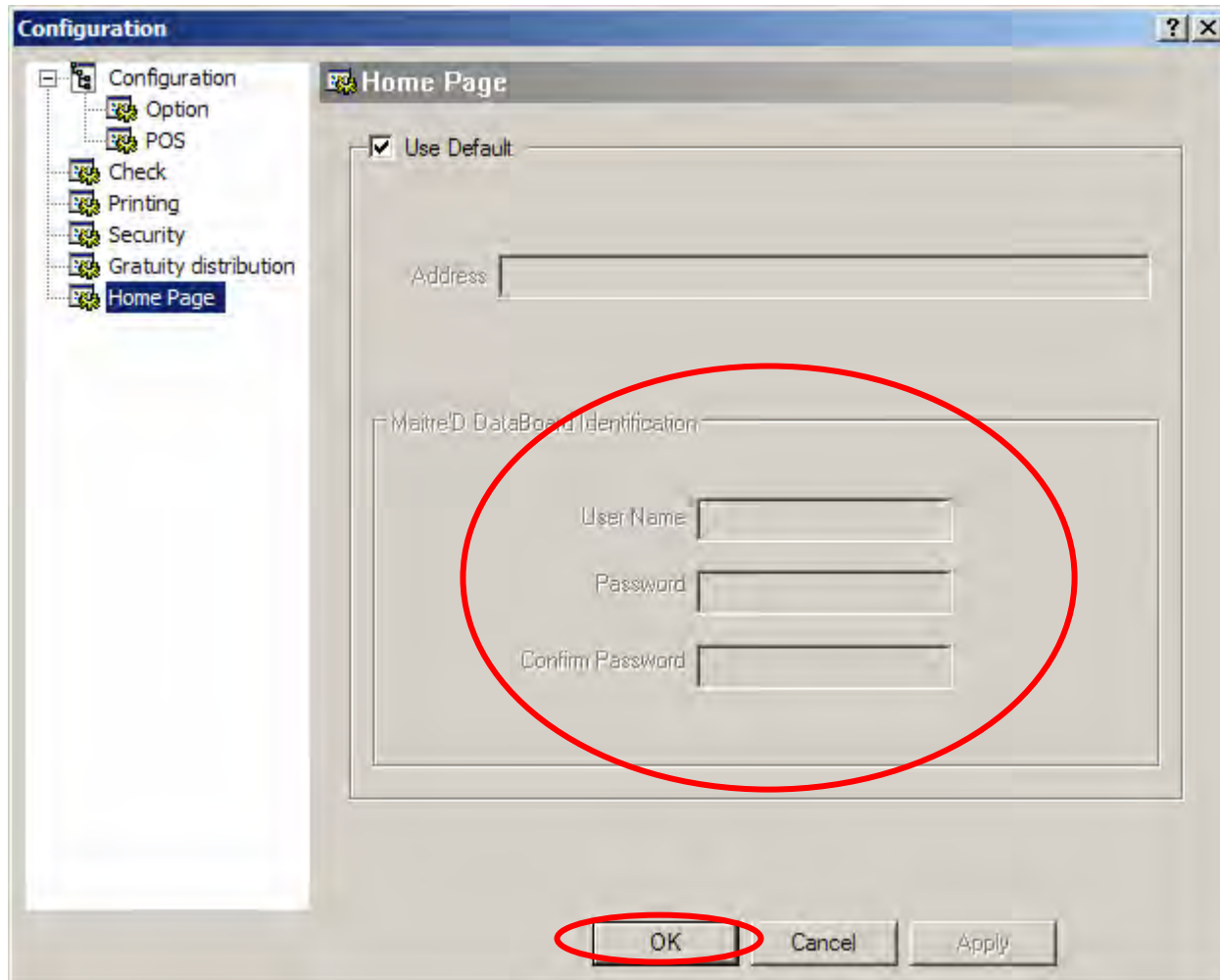


P.O.S. Control Options

Click to continue

This screen can be used to change the POS Control module's Default Home Page to the URL of your Maitre'D Databoard server or any other web page

Click on OK.





This concludes the “P.O.S. Control Options” presentation.

We hope that this document helped you to understand the steps needed to setup P.O.S. Control Options in Maitre'D.