

[Click to begin](#)



**Maitre'D®**  
2005 Setup Guidelines

Logical Printers



## Logical Printers

[Click to continue](#)

This document will guide you through setting up Logical Printers in Maitre'D.

This allows you to program Logical printers for different locations in the restaurant.

Logical printers are conceptual (not physical)

For example, you can program different logical printers for Grill, Cold Table, and Pizza, even if only one physical printer exists in the kitchen. Maitre'D splits all orders by logical printer and prints separate chits on the kitchen printer.

You may also use logical printers to distribute the orders to different locations. For example: There are two bars (Dining Room and Lounge), each with a physical bar printer. In quiet periods, the Dining Room bar is closed. Workstations set to logical printer 'Bar' have orders which go to either the physical printer in the Dining Room or Lounge Bar during peak periods, and redirect to the Lounge Bar physical printer during quiet periods.

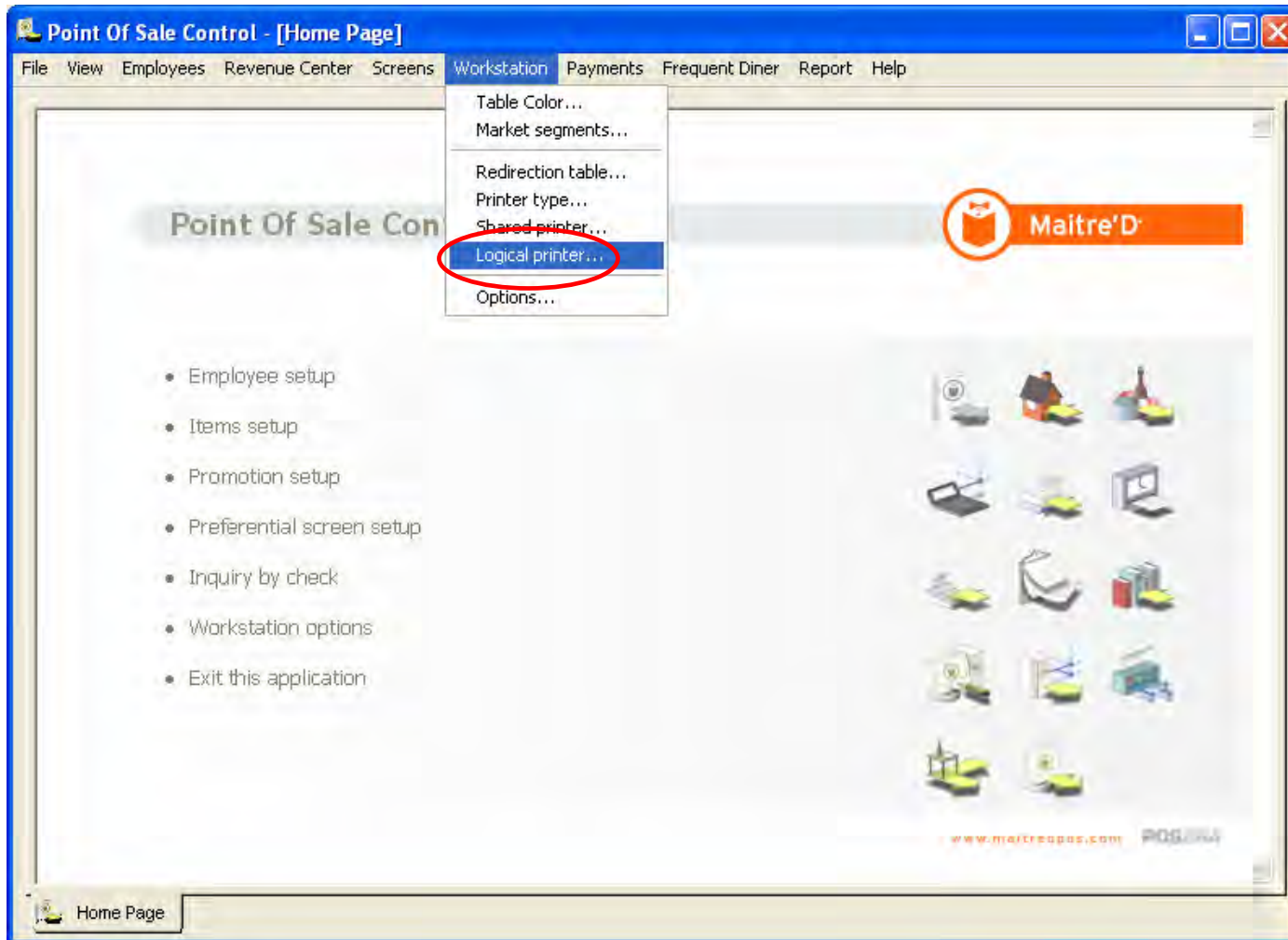
Redirection Tables can be used to reroute logical printers to physical printers.



## Logical Printers

Click to continue

In the P.O.S. Control module, click on Workstation, then click on Logical Printers.







This concludes the “Logical Printers ” presentation.

We hope that this document helped you to understand the steps needed to setup Logical Printers in Maitre'D.

Refer to the “Redirection Tables” presentation for explanation on how to redirect printouts.