

Click to begin



**Maitre'D®**

2005 Setup Guidelines

Preferential Screens



This document will guide you through setting up Preferential Screens in Maitre'D.

The Order Screen is composed of fixed command Screen Layout areas, a Preferential Screen area, and an history area.

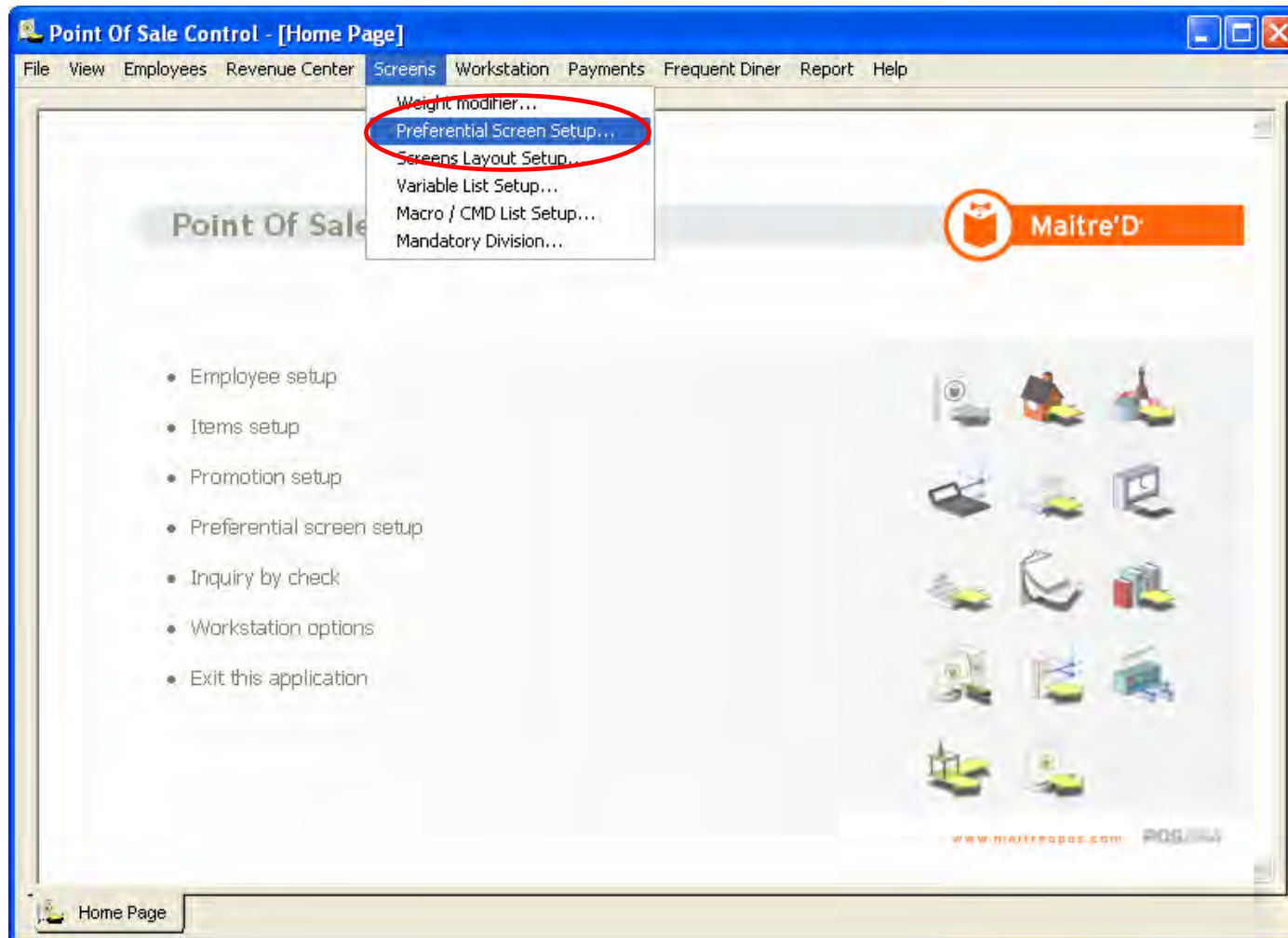
Preferential Screens are custom view pages of revenue centers.

Preferential Screens allow to have specific Items and List of Items buttons appear onscreen for different employees depending on the revenue center and the time of day.

## Preferential Screens

Click to continue

In the P.O.S. Control module, click on Screens, then click on Preferential Screen Setup.

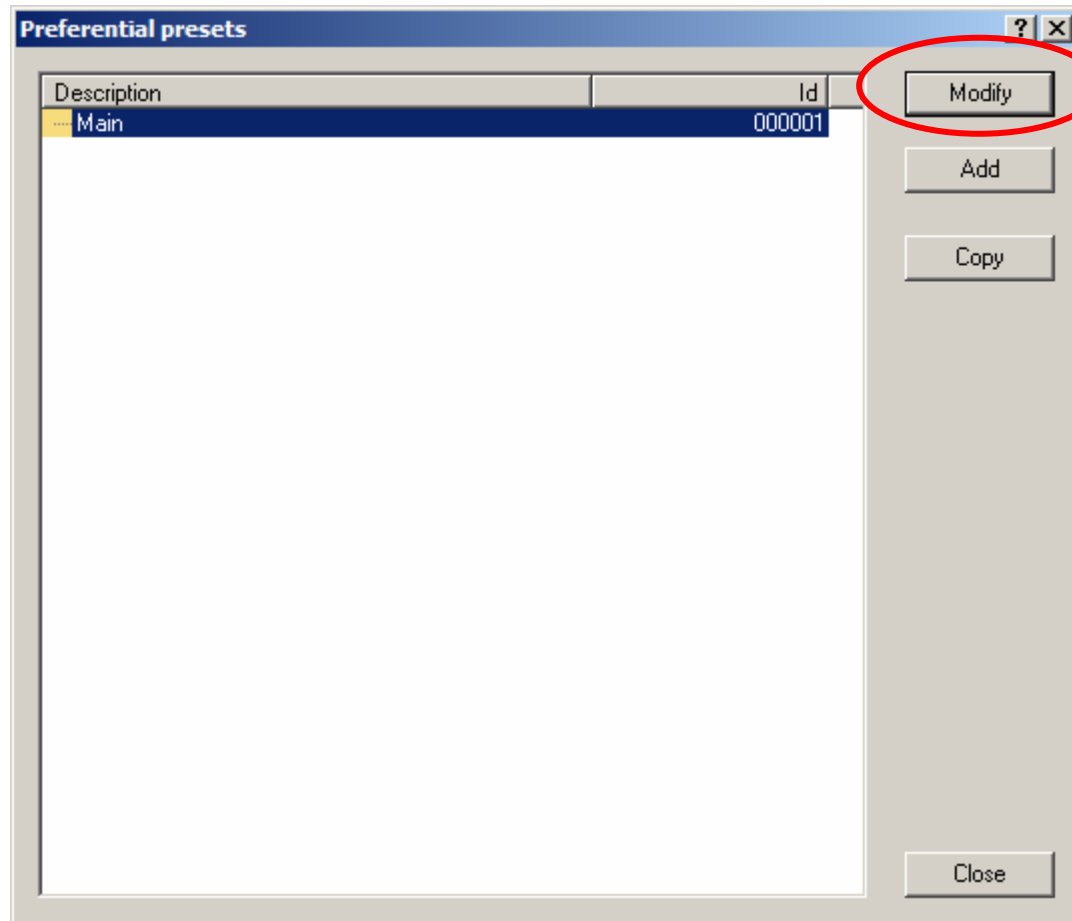




## Preferential Screens

Click to continue

Click on MODIFY.

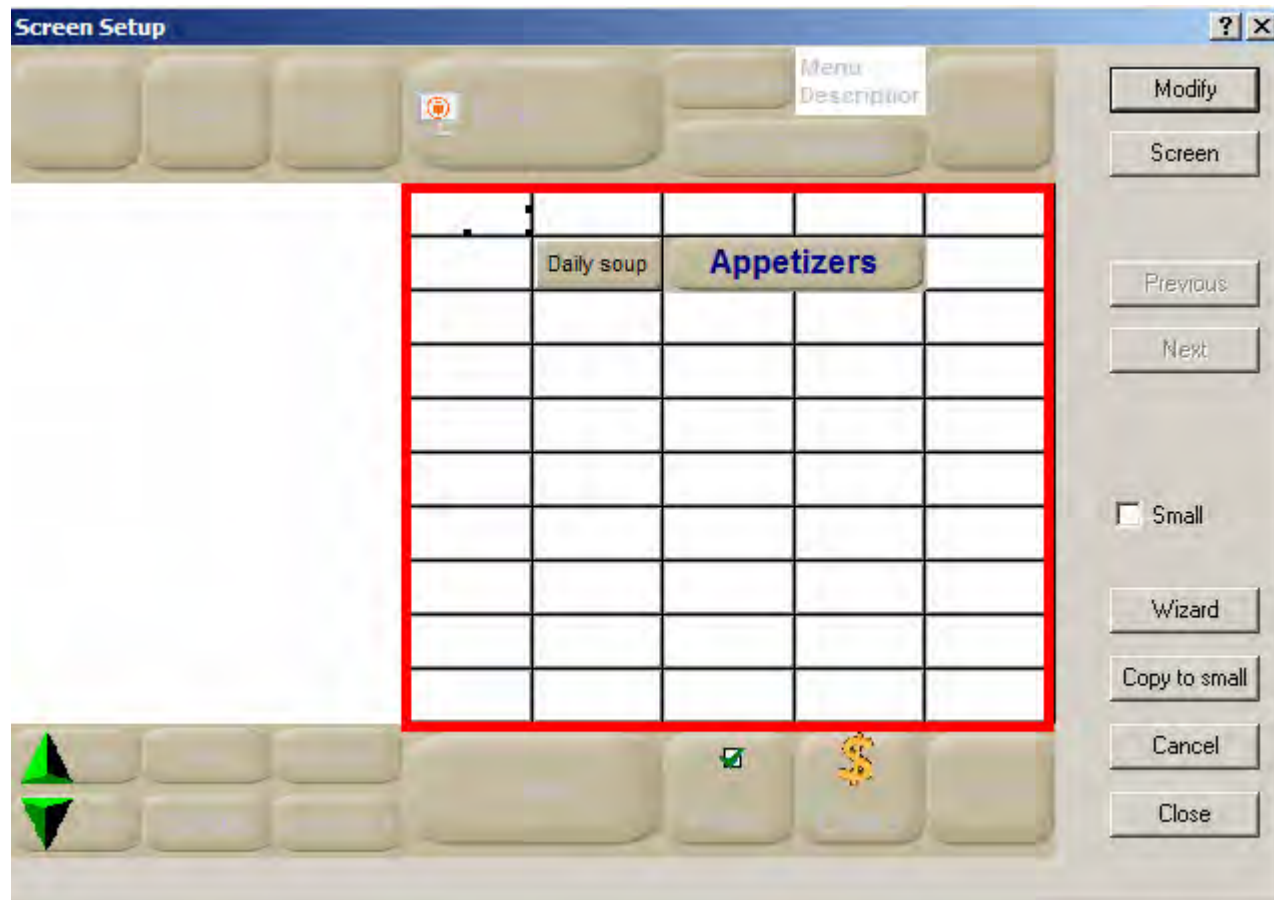




## Preferential Screens

Click to continue

This is the area that is controlled by the Preferential Screen Setup.







## Preferential Screens

[Click to continue](#)

Enter a **Description** of the type of items, employees or time period for which this screen is useful. Select the **Screen Type** dimension. Choices are 18, 25, 36, 50 or Custom.

Screen order setup #1 - MAIN

Screen

Screen

Setup

Description: MAIN

Screen type: Screen 50

Screen Dimension

Number of rows: 18

Number of columns: 5

OK Cancel Apply

The **Screen Dimension** area is used to define the number of buttons of a nonstandard screen type. If you select Custom as the screen type, above, you can specify the number of rows and columns.

Click on OK.





## Preferential Screens

[Click to continue](#)

Select the **Type** of command to narrow down the list.

Note: Refer to the contextual help for more information on the available Types.

Select the **Command** this button is used for .

Note: Refer to the contextual help for more information on the available Commands.

Some commands require definition of the **Usage**, such as a Variable List, in this example.

Some commands also require definition of the Revenue Center.

You can **Sort** the items within that list alphabetically and **Fix** the screen to allow multiple choices

Screen order command setup #2 -

Command Setup

Command Setup

Type: Items, course, discount...

Command: Item

Usage: Garlic snails [08307]

Revenue Center: Dining room

RLIC SNA

OK Cancel Apply

## Preferential Screens

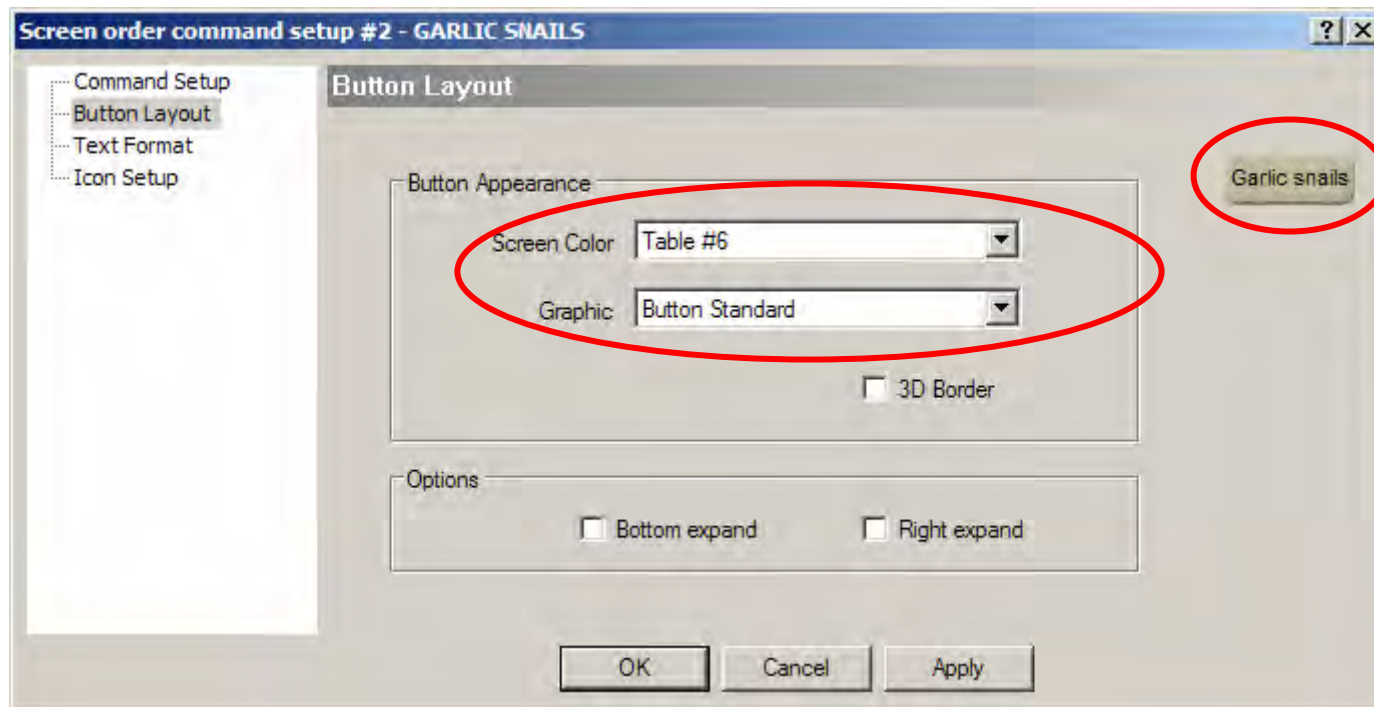
Click to continue

Select the **Screen Color** pattern of the text and button.

Select the **Graphic** for the shape of the button.

You can also give the button a **3D Border**.

You can **Expand** the key dimensions using the options below.





## Preferential Screens

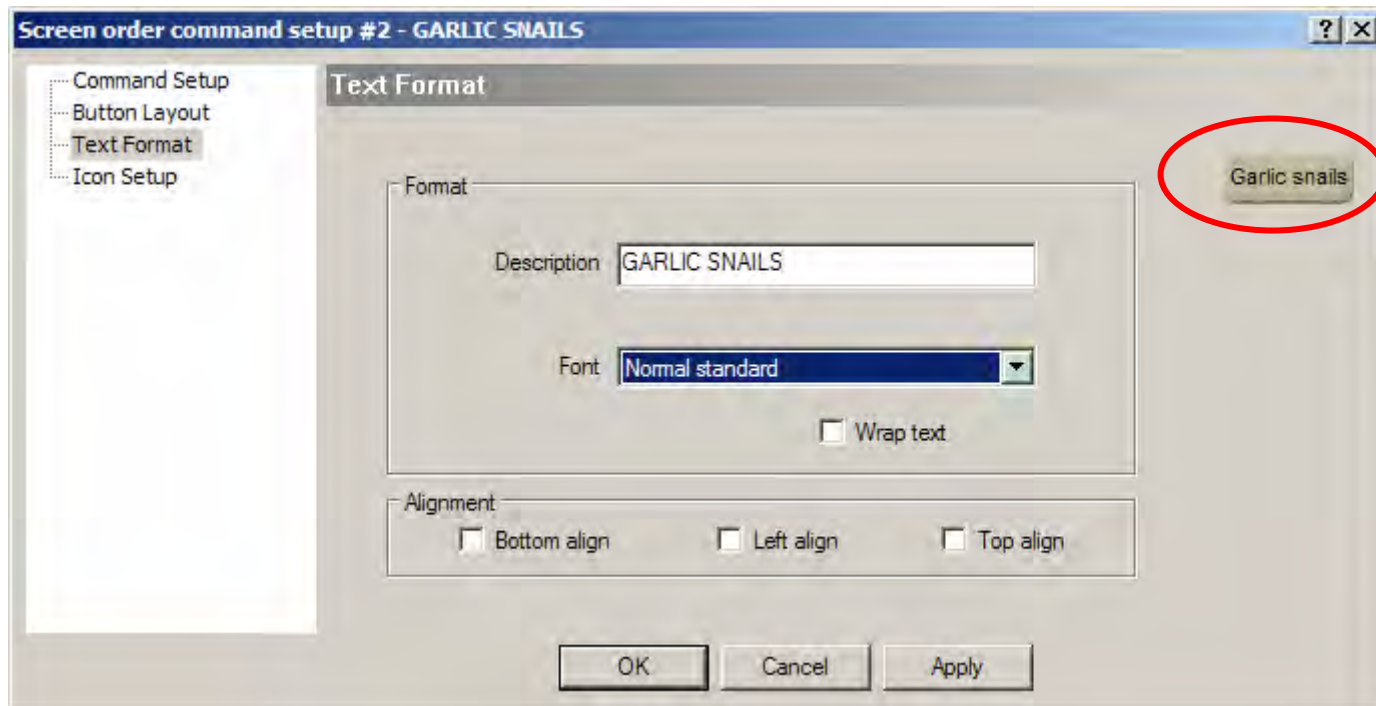
Click to continue

You can change the default **Description** of the button.

Select the **Font** type of the button.

You can also **Wrap** long Text in the button.

The **Alignment** options are used to define the position of the text within the button.





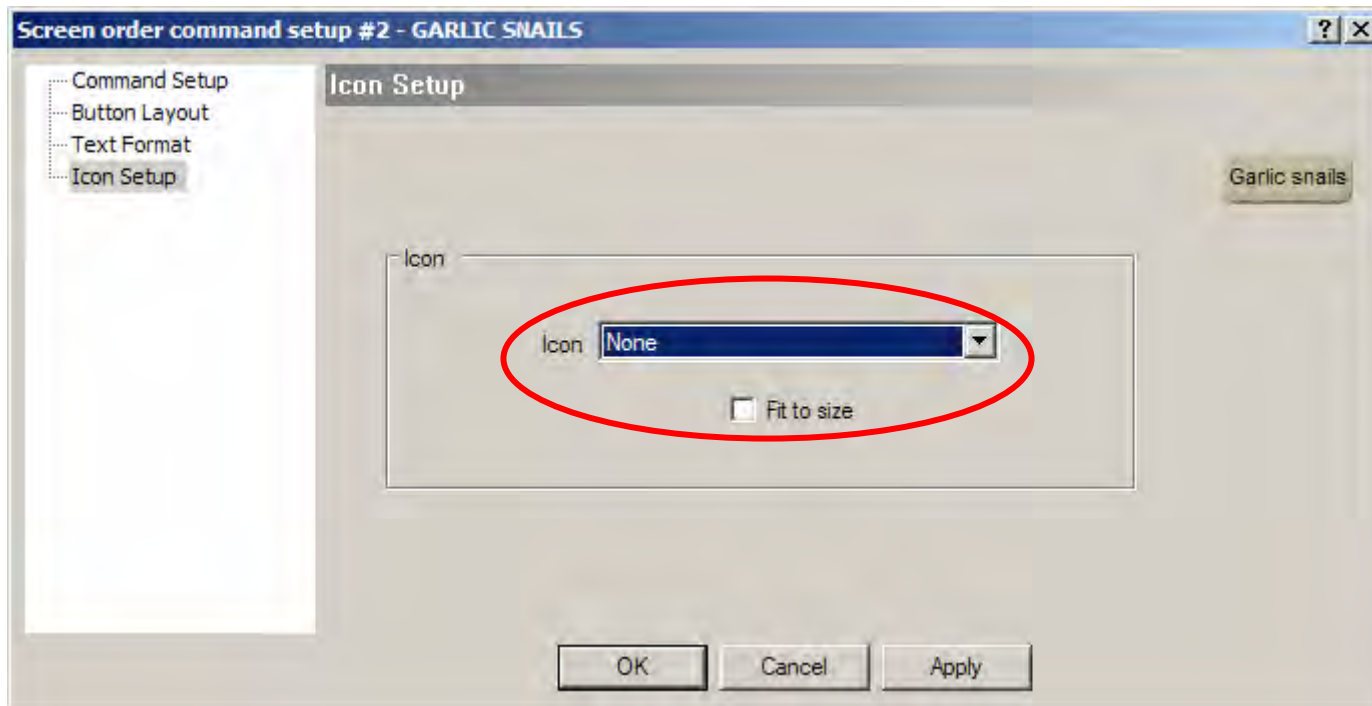
## Preferential Screens

Click to continue

You can select an Icon to include within the button.

Enable the Fit To Size option to enlarge the icon to fill the whole area of the button.

Click on OK.



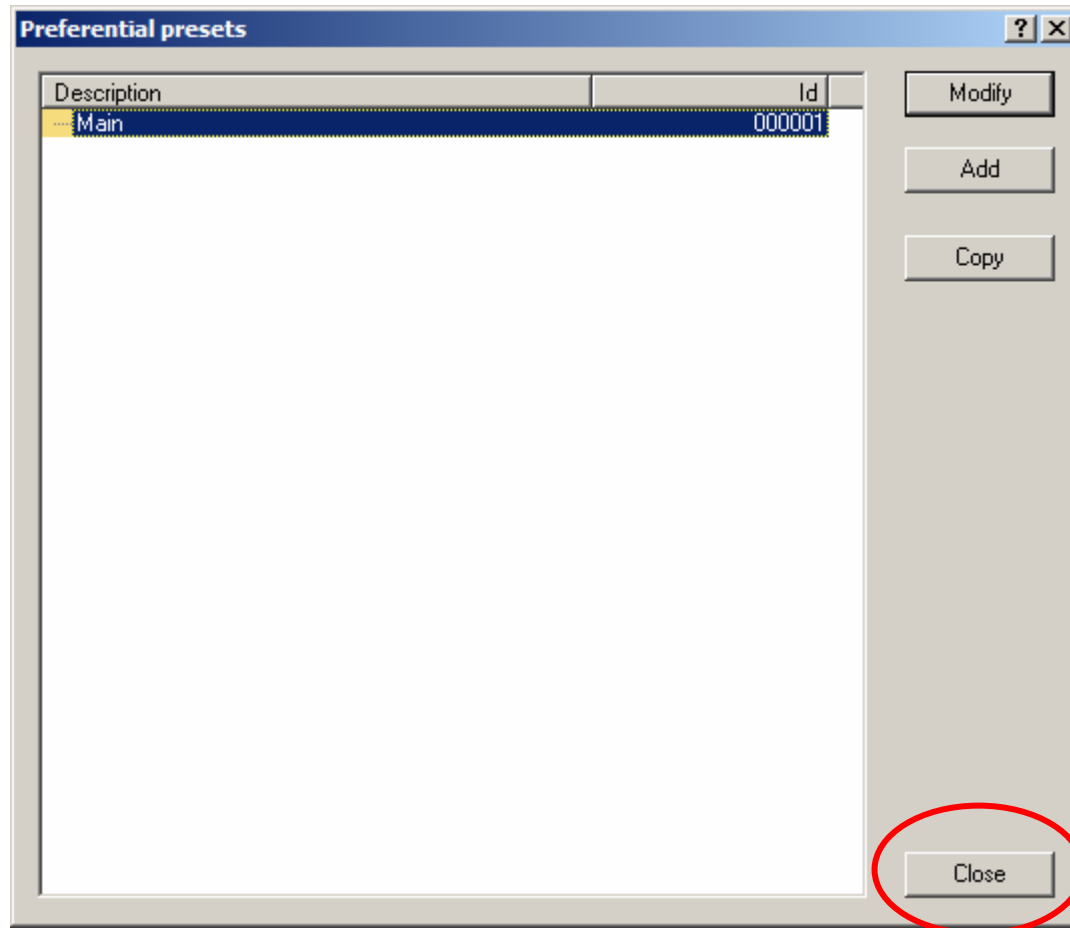




## Preferential Screens

Click to continue

Click on CLOSE once more.





This concludes the “Preferential Screens” presentation.

We hope that this document helped you to understand the steps needed to setup Preferential Screens in Maitre'D.

Refer to the “Screen Access” presentation for explanations on how to link Preferential Screens to Employees depending on modes and revenue centers.