

Click to begin



Maitre'D®

2005 Setup Guidelines

Screen Layouts



This document will guide you through setting up Preferential Screens in Maitre'D.

The Order Screen is composed of fixed command Screen Layout areas, a Preferential Screen area, and a history area.

Screen Layouts allow customization of the screen structure for specific operation needs.

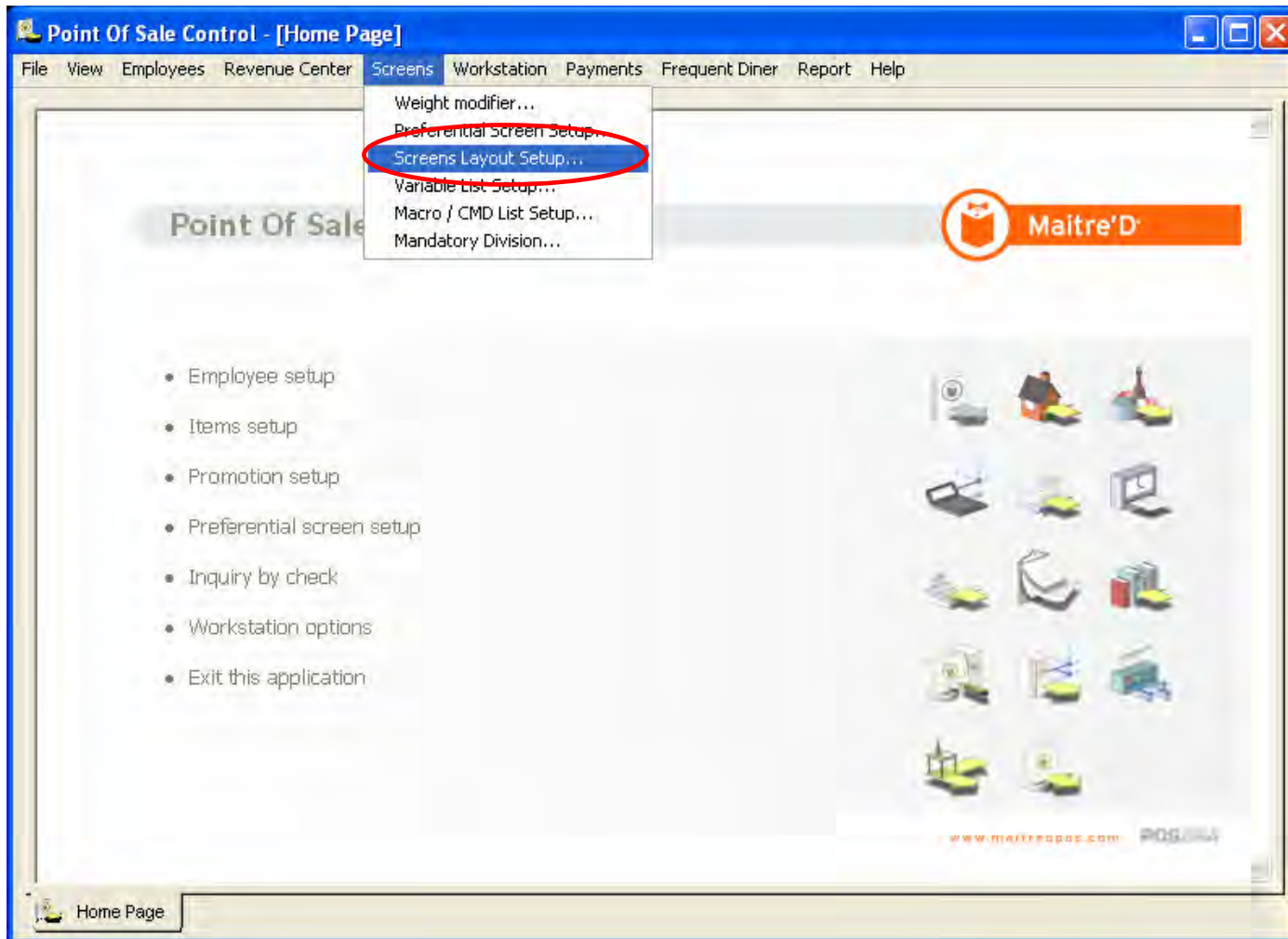
Screen Layouts determine which specific Command buttons appear onscreen for different employees.



Screen Layouts

Click to continue

In the P.O.S. Control module, click on Screens, then click on Screens Layout Setup.

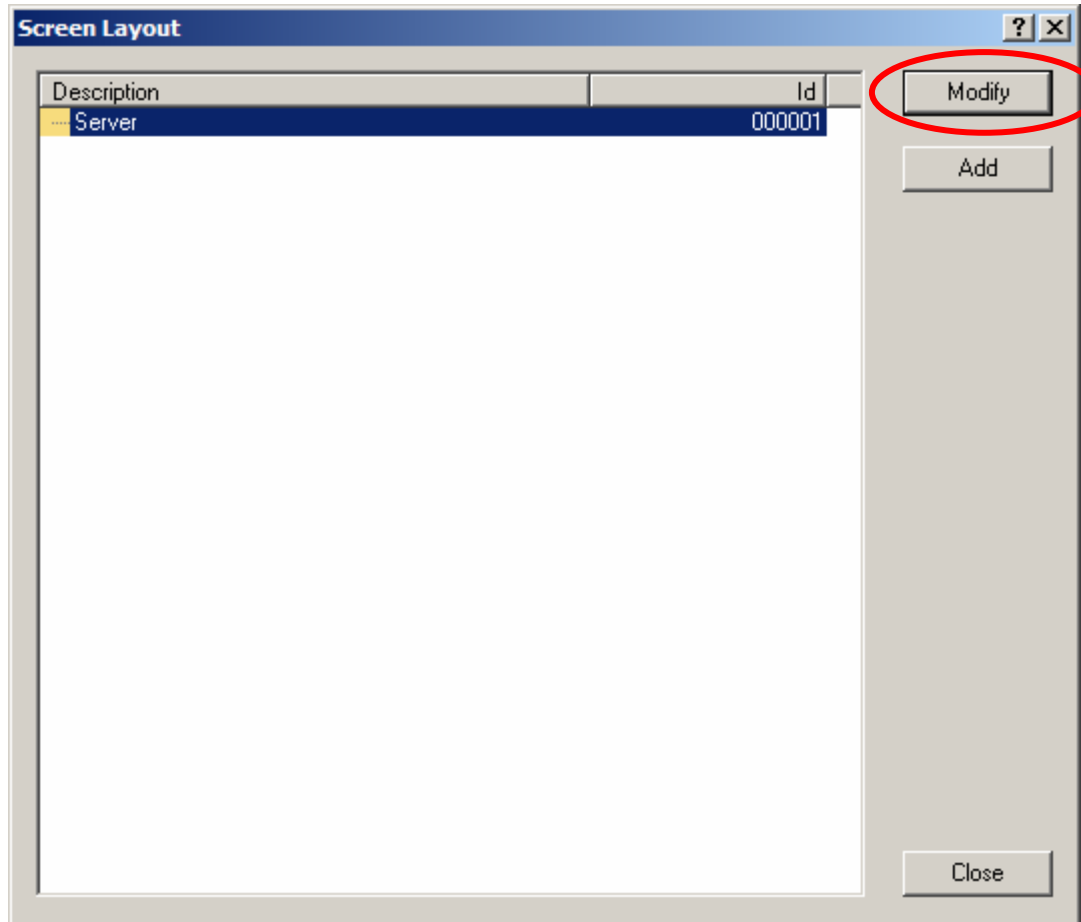




Screen Layouts

Click to continue

Click on MODIFY.

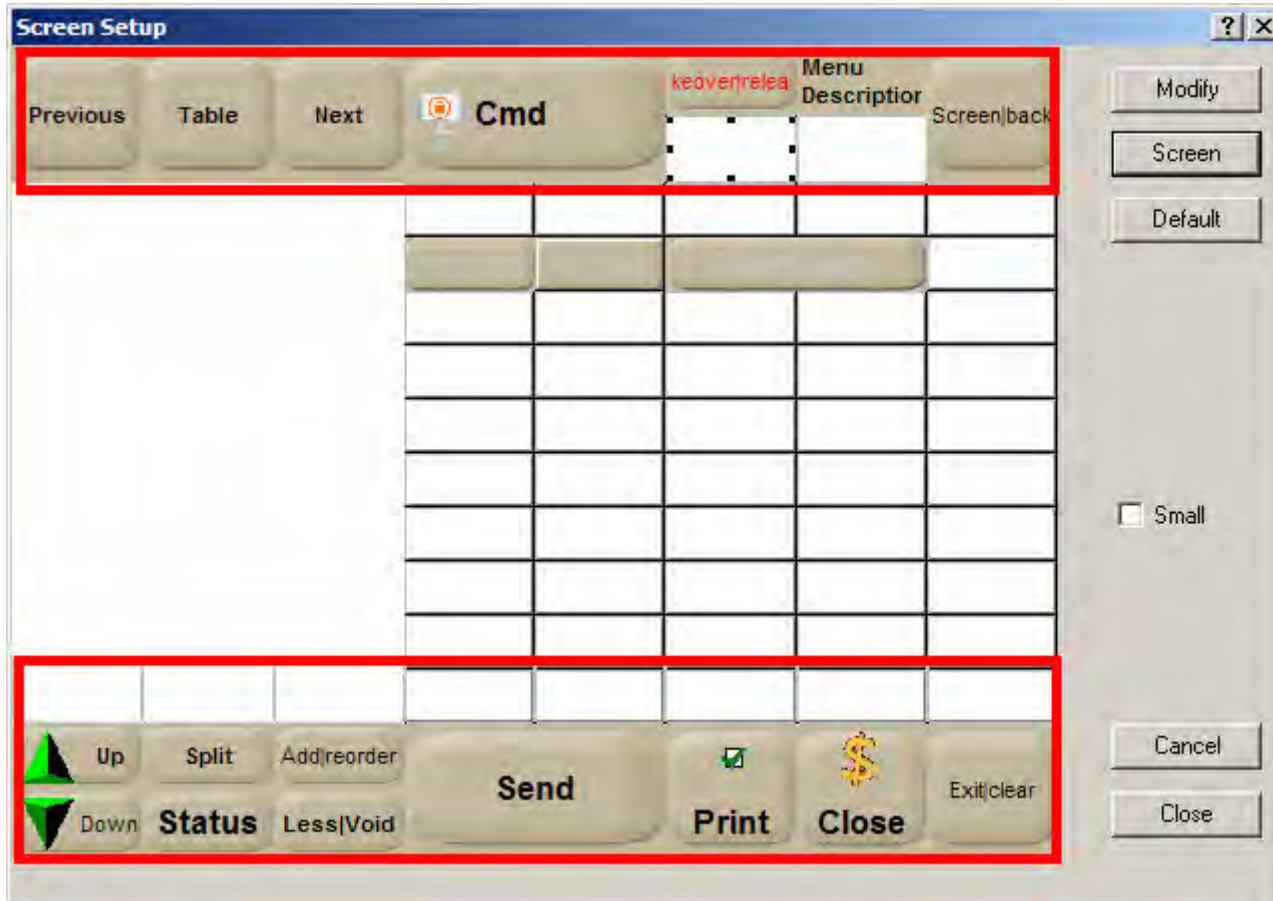




Screen Layouts

Click to continue

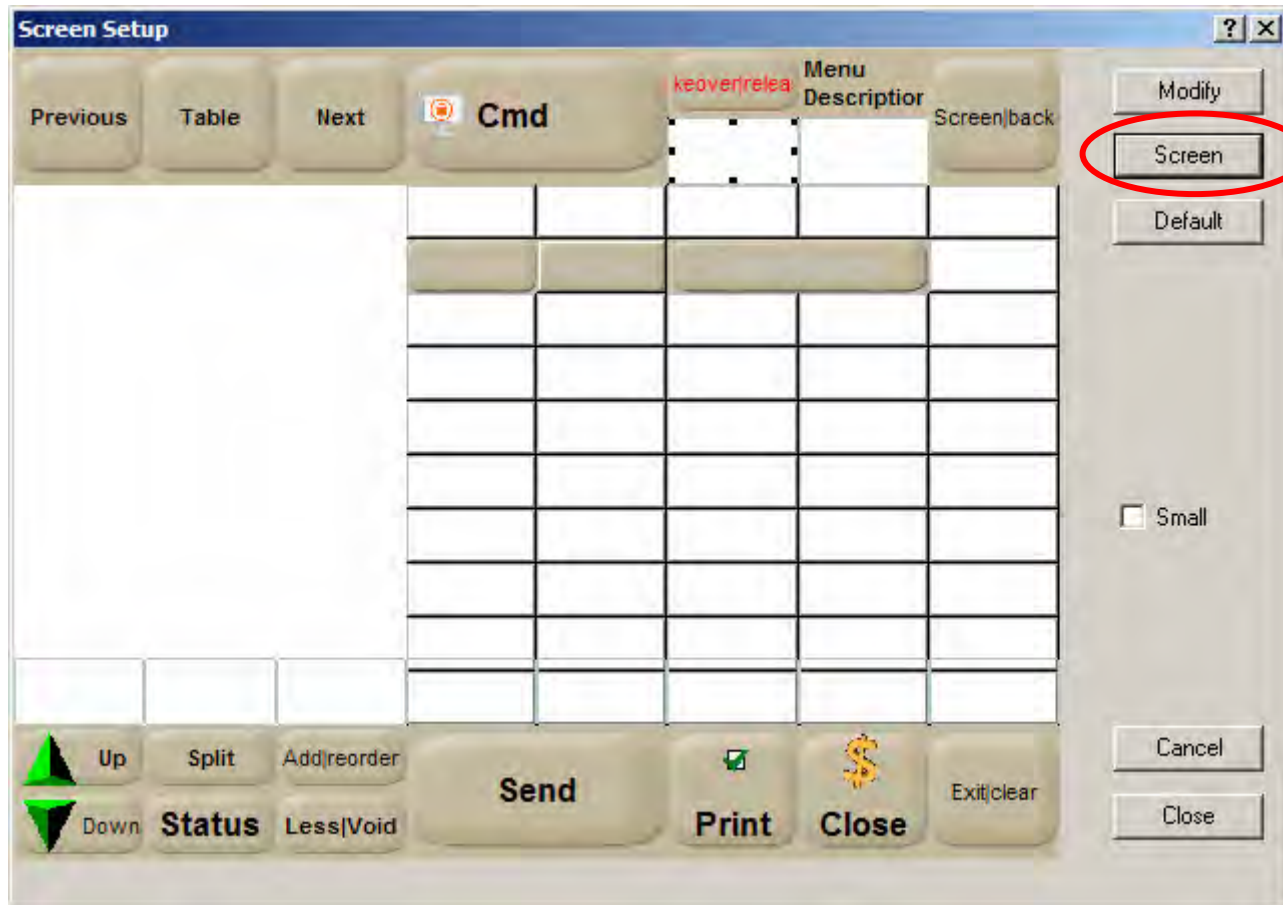
These are the buttons that are controlled via screen layout setup.





Screen Layouts

Click on Screen

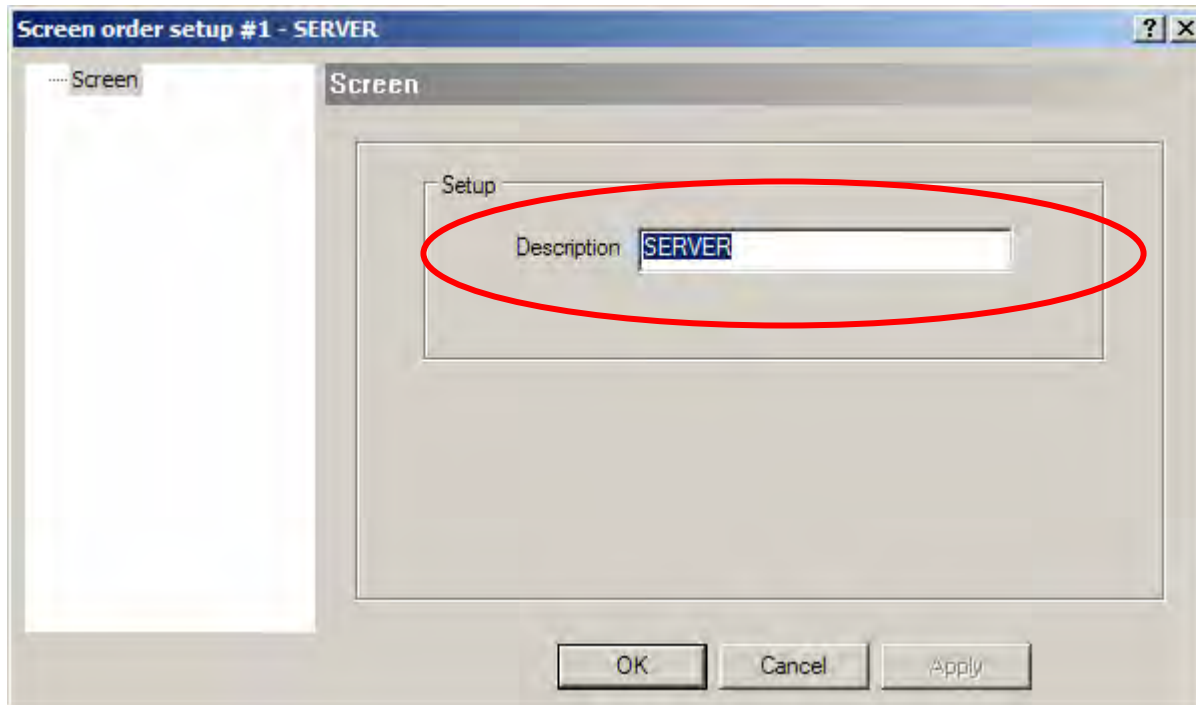




Screen Layouts

[Click to continue](#)

Enter a **Description** of the type of employees for which this screen will be useful
Click on OK.

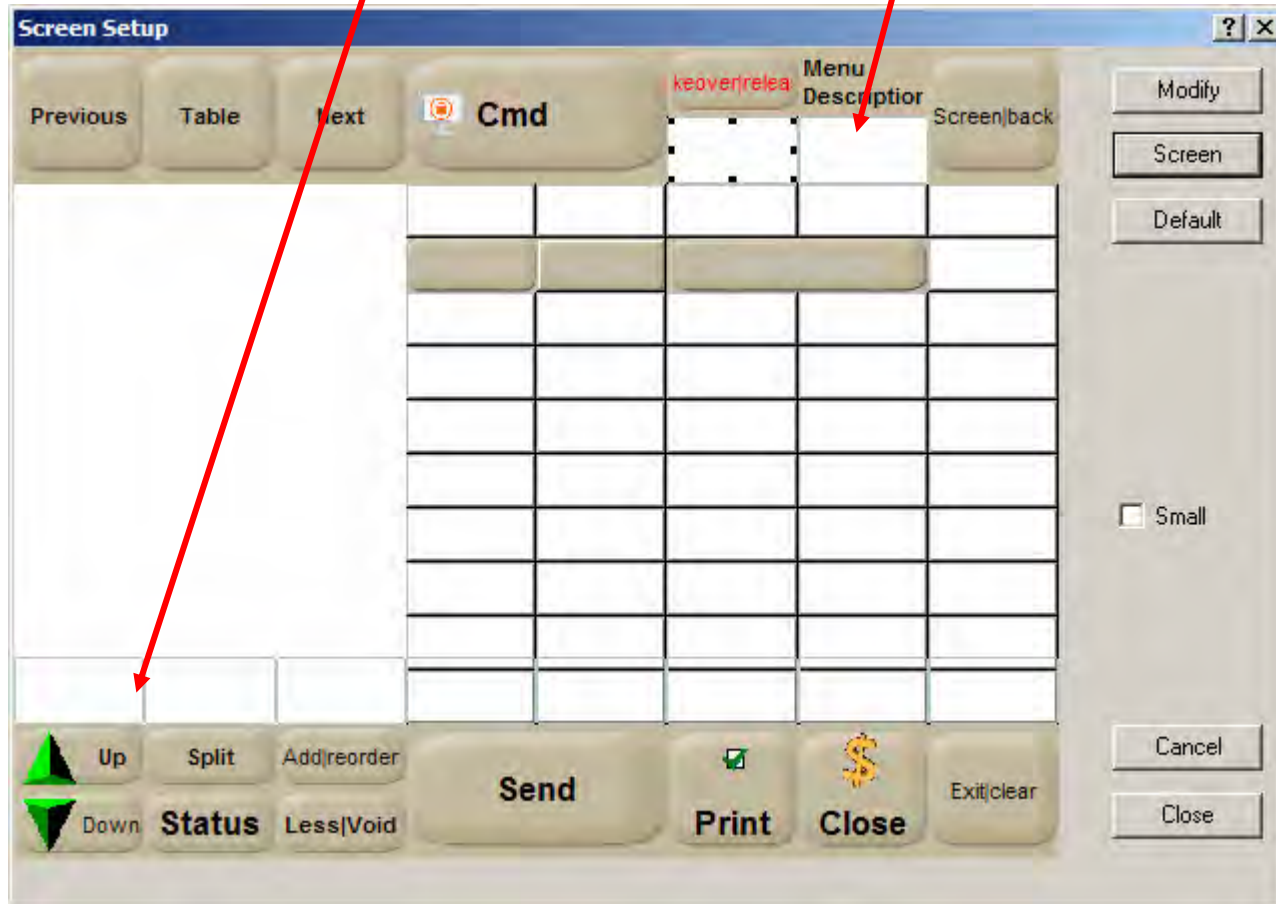




Screen Layouts

Click to continue

They can be up to 2 rows of Commands buttons at the top, and up to 3 rows at the bottom of the screen.

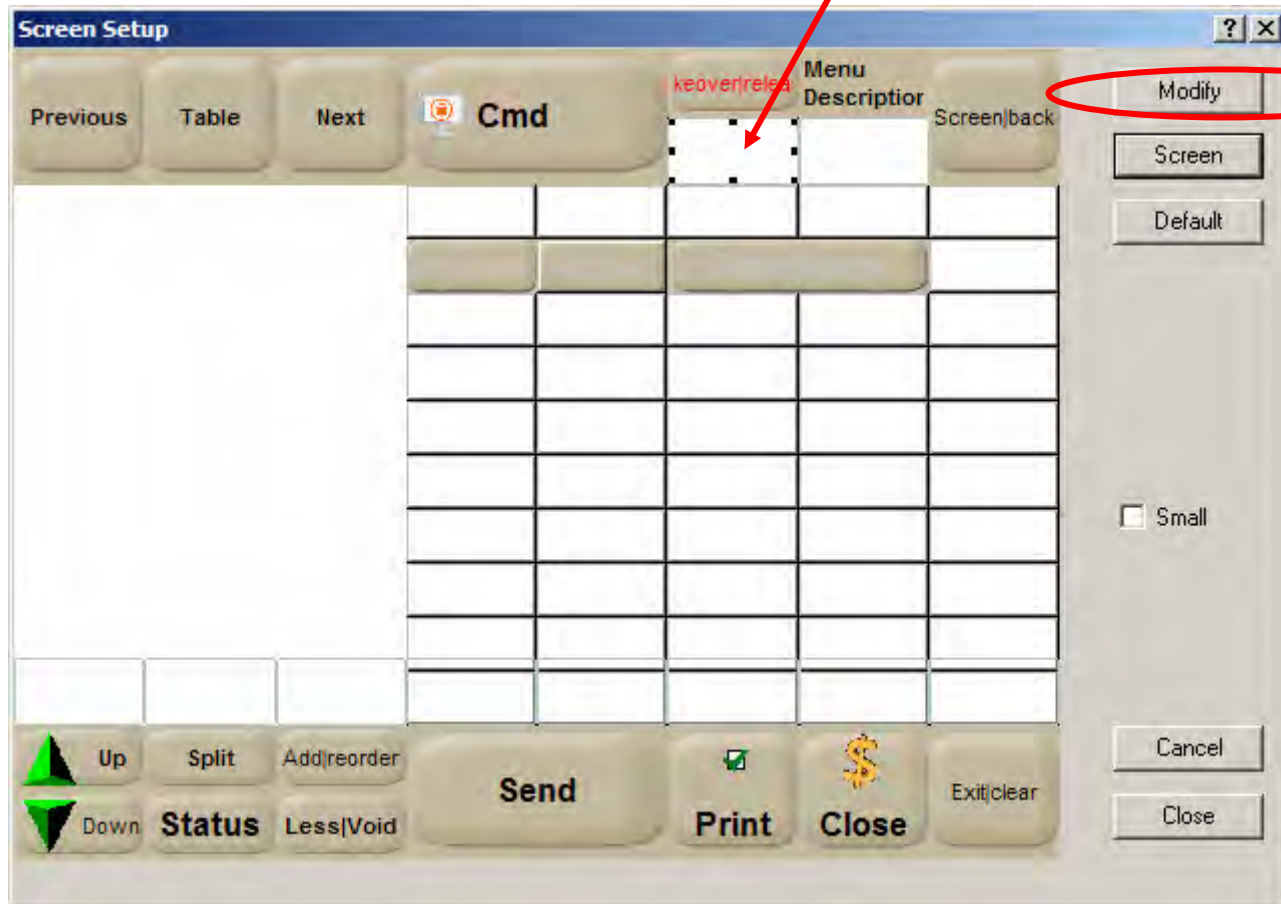




Screen Layouts

Click to continue

Click on an empty button placeholder.
Click on MODIFY.





Screen Layouts

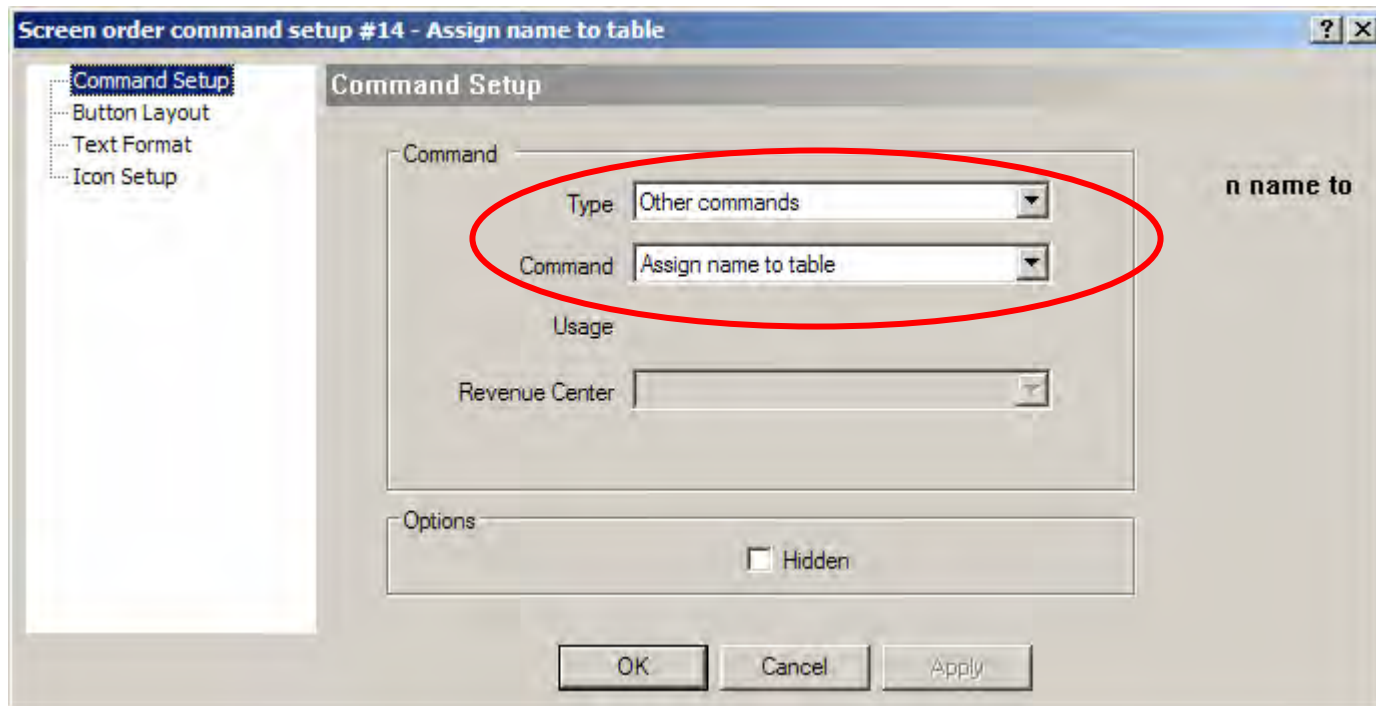
[Click to continue](#)

Select the **Type** of command to narrow down the list.

Note: Refer to the contextual help for more information on the available Types.

Select the **Command** this button is used for .

Note: Refer to the contextual help for more information on the available Commands.





Screen Layouts

Click to continue

Some commands require a specific **Usage**, such as a Discounts for example.

Some commands also require a specific Revenue Center be defined.

A command can be **Hidden** until it is applicable, such as a seasonal discount for example.

Click on Button Layout.

The screenshot shows a dialog box titled "Screen order command setup #14 - Assign name to table". On the left, a tree view shows "Command Setup" selected, with sub-items "Button Layout", "Text Format", and "Icon Setup". The main area is titled "Command Setup" and contains the following fields:

- Type:** Other commands (dropdown)
- Command:** Assign name to table (dropdown)
- Usage:** Revenue Center (dropdown, circled in red)
- Options:** Hidden

Buttons for "OK", "Cancel", and "Apply" are at the bottom. The text "Assign name to" is partially visible on the right side of the dialog.



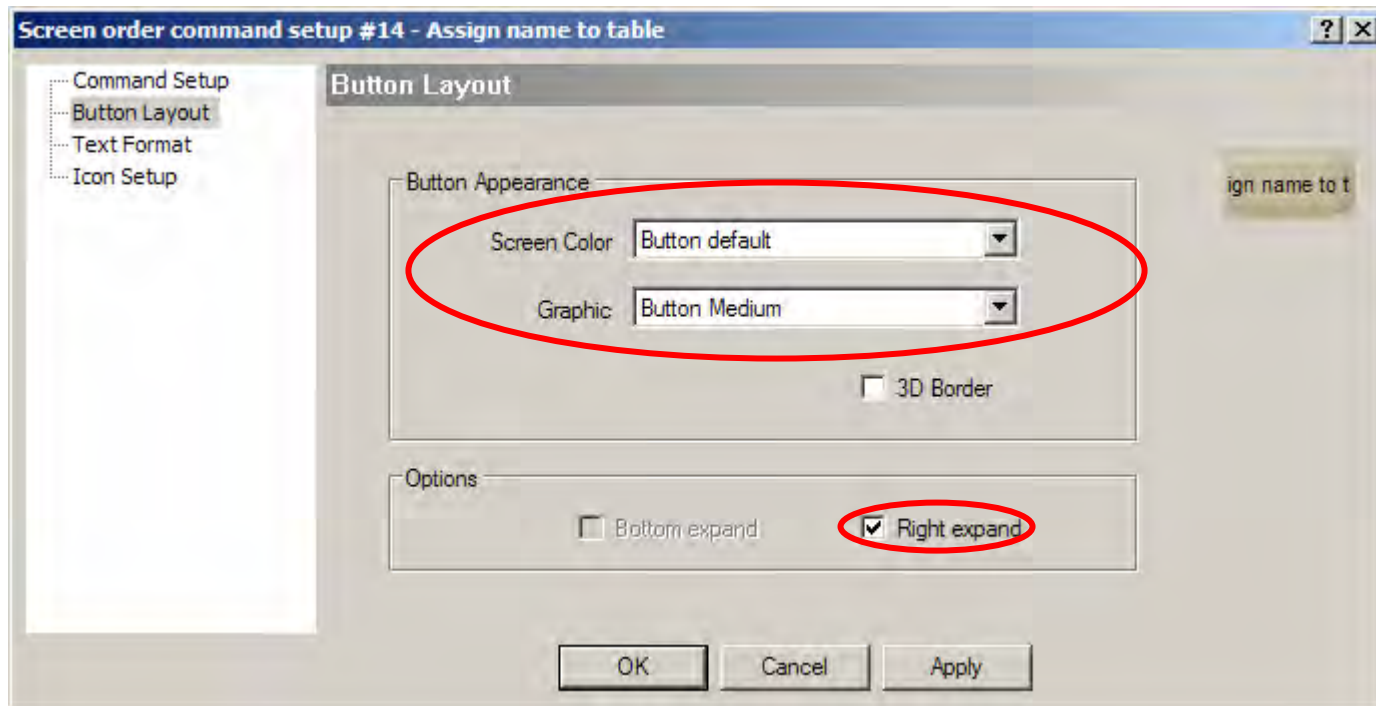
Screen Layouts

[Click to continue](#)

Select the **Screen Color** pattern of the text and button.

Select the **Graphic** for the shape of the button.

You can also **Expand** the button to the right or bottom





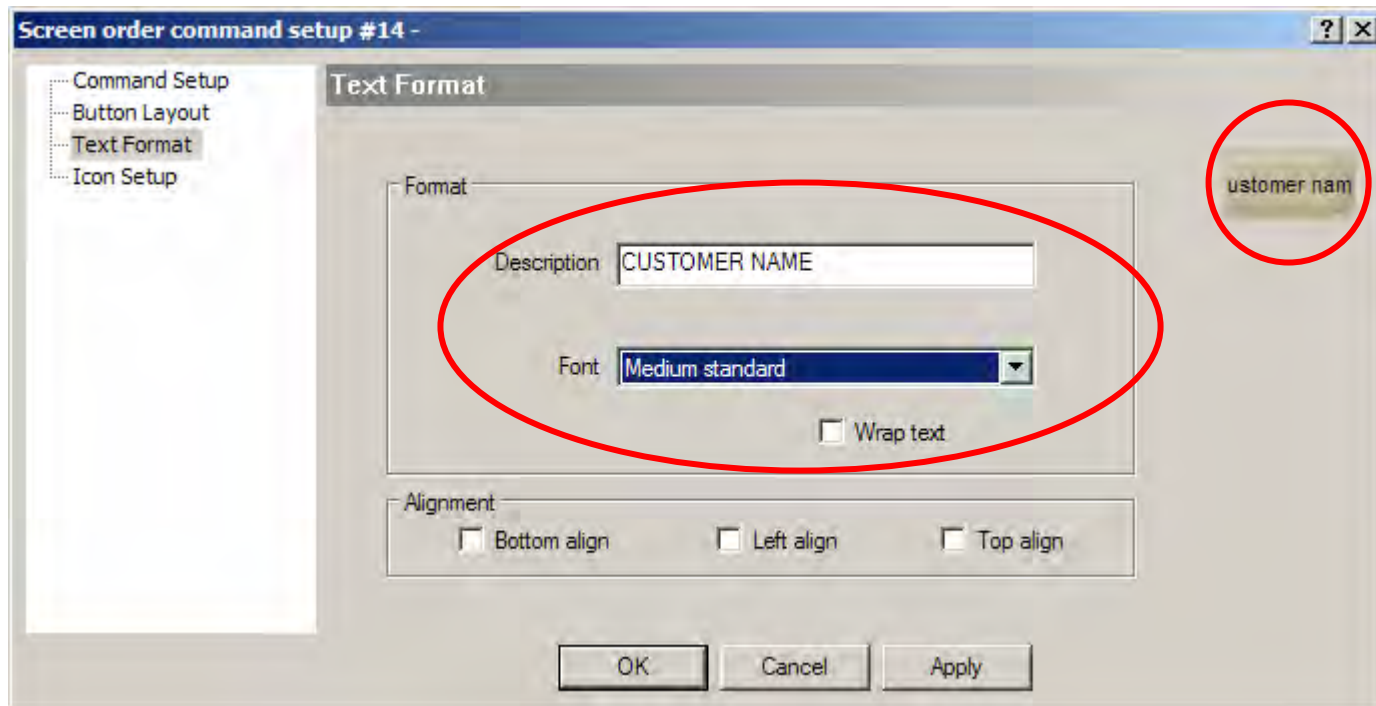
Screen Layouts

Click to continue

You can change the default **Description** of the button.

Select the **Font** type of the button.

You can also **Wrap** long Text in the button.





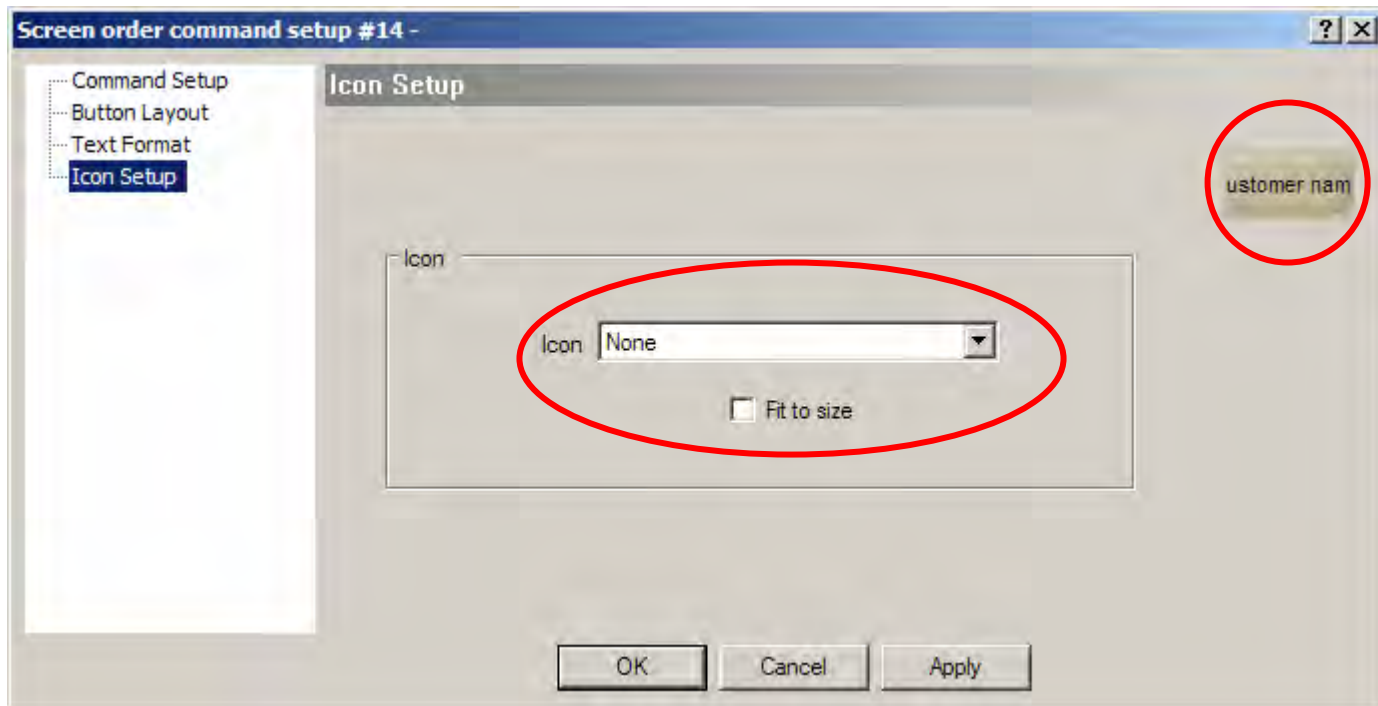
Screen Layouts

Click to continue

You can select an **Icon** to include within the button.

Enable the **Fit To Size** option to enlarge the icon to fill the whole area of the button.

Click on OK.

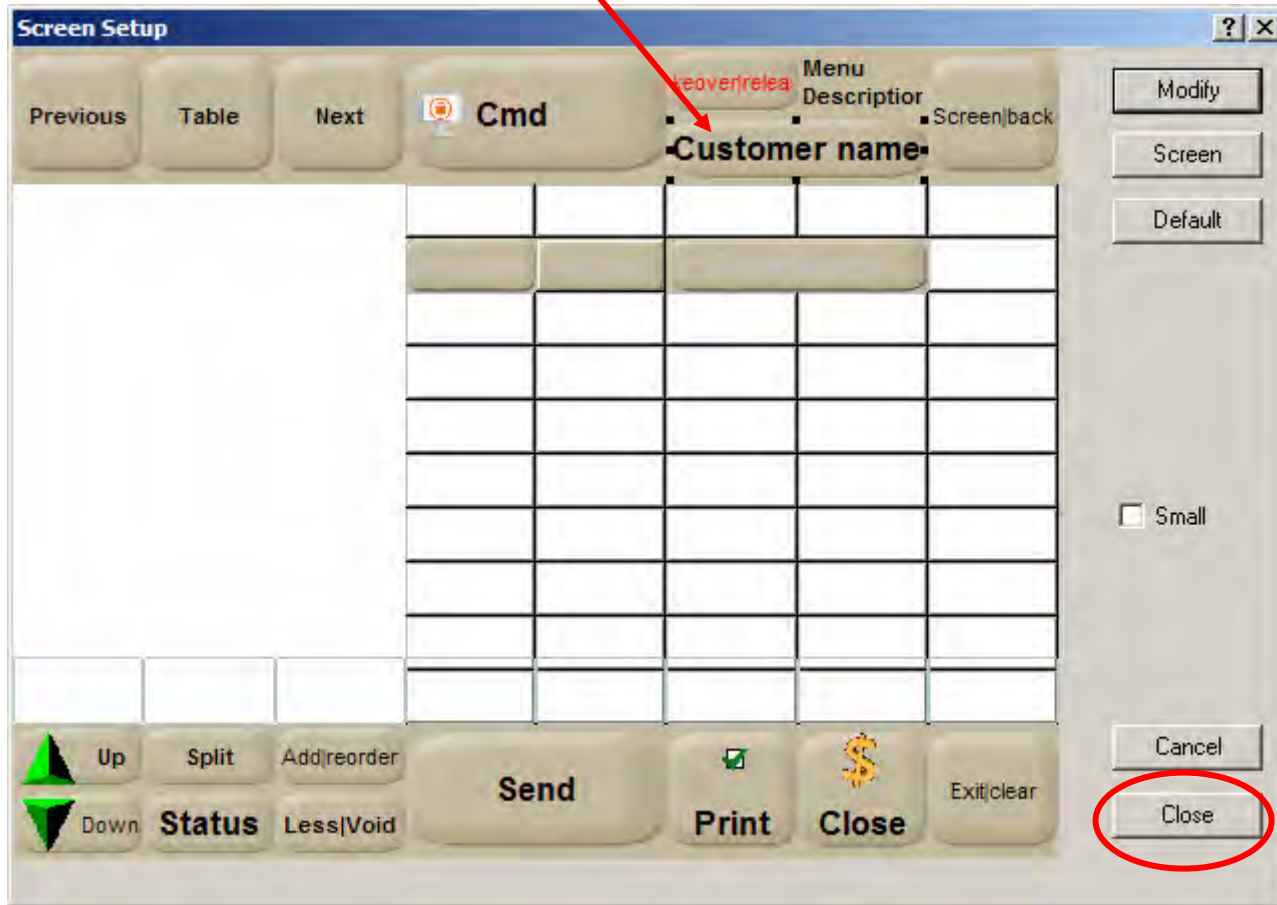




Screen Layouts

Click to continue

Click on CLOSE. This step saves the changes made to the screen.

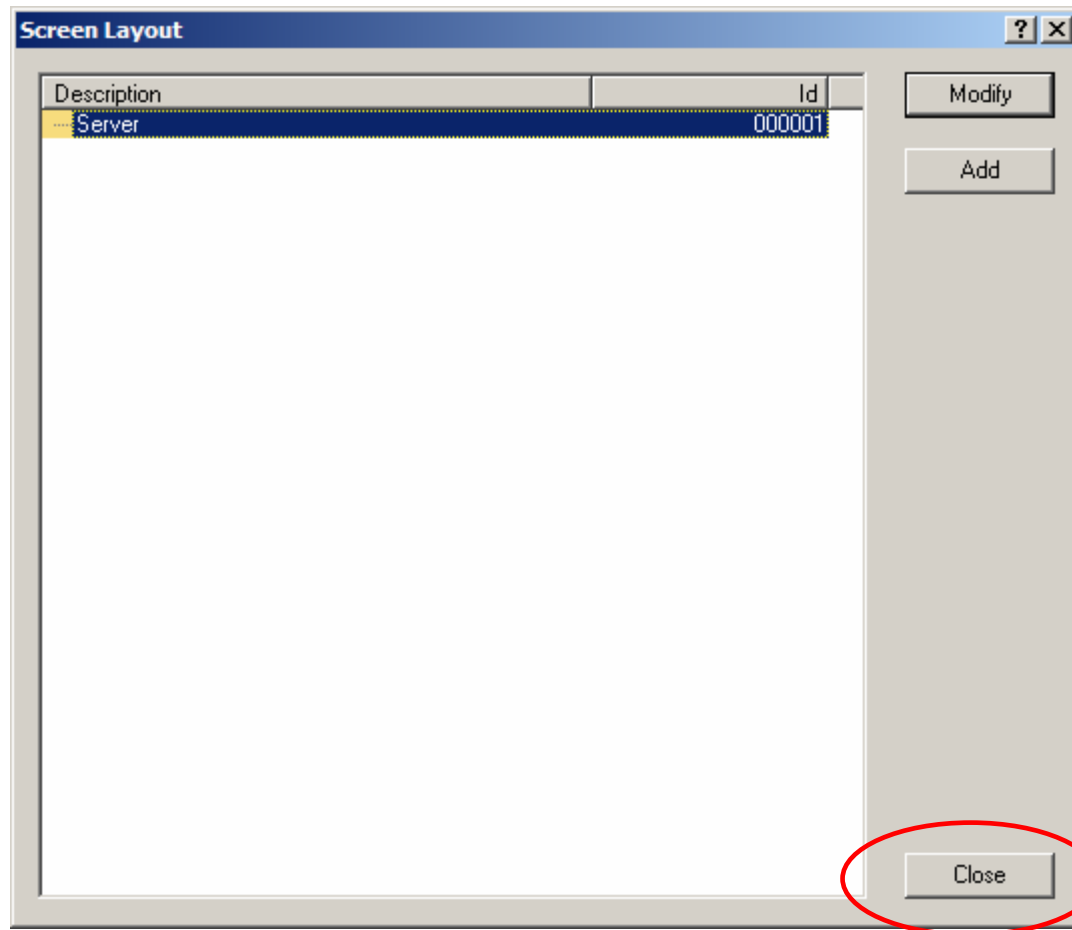




Screen Layouts

Click to continue

Click on CLOSE once more.





This concludes the “Screen Layouts” presentation.

We hope that this document helped you to understand the steps needed to setup Screen Layouts in Maitre'D.

Refer to the “Employees” presentation for explanations on how to link employees to Screens Layouts.