

Click to begin



Maitre'D®
2005 Setup Guidelines

Screen Access



This document will guide you through setting up Employees Screen Access in Maitre'D.

The Order Screen is composed of fixed command Screen Layout areas, a Preferential Screen area, and an history area.

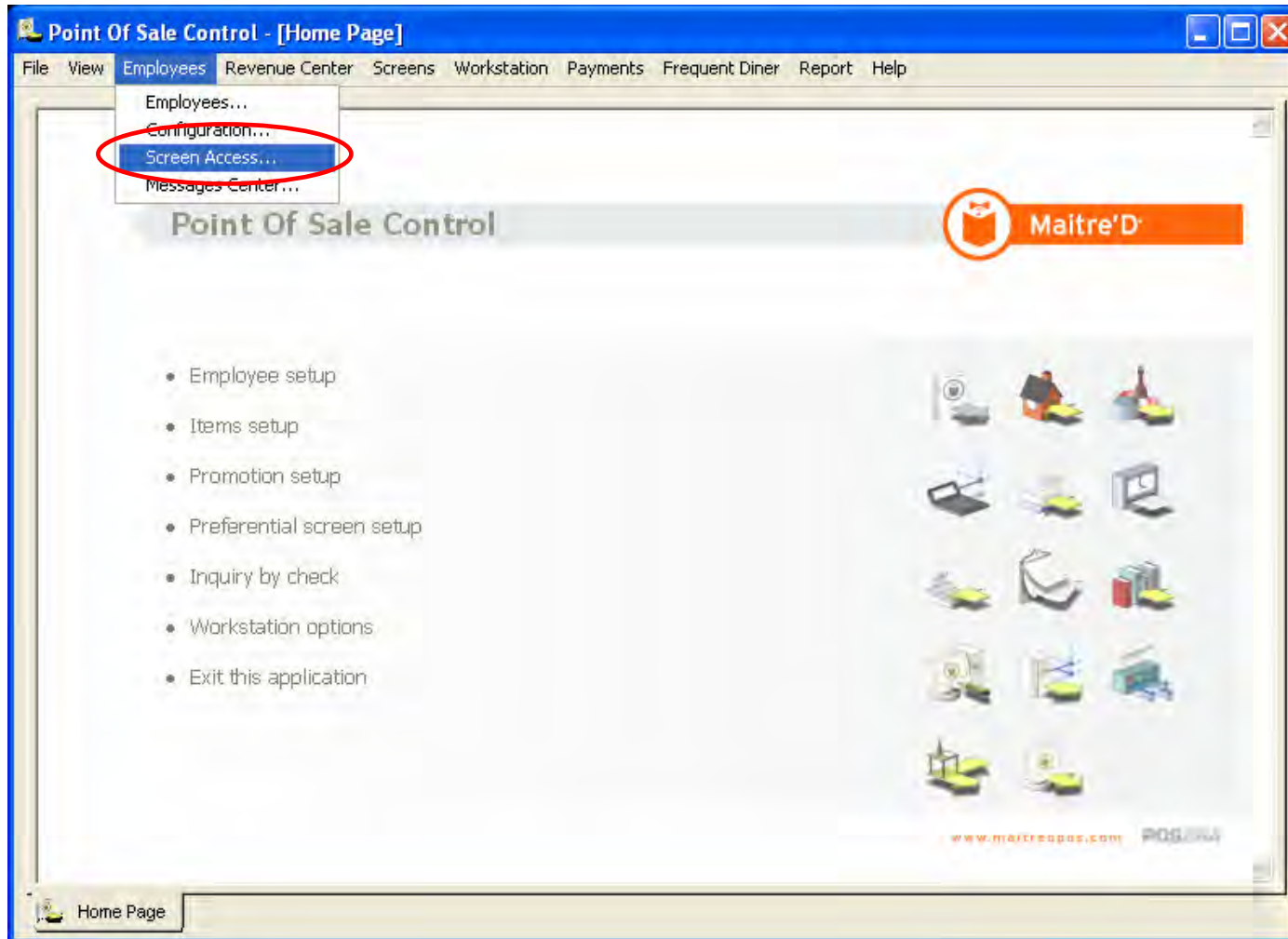
Preferential Screens are custom view pages of revenue centers with specific Items and List of Items buttons appearing onscreen for different employees.

Screen Access allows to determine which Preferential Screen employees see on the Order Screen, based on revenue center and time of day.

Step 1: Screen Access

Click to continue

In the P.O.S. Control module, click on Employees, then click on Screen Access.

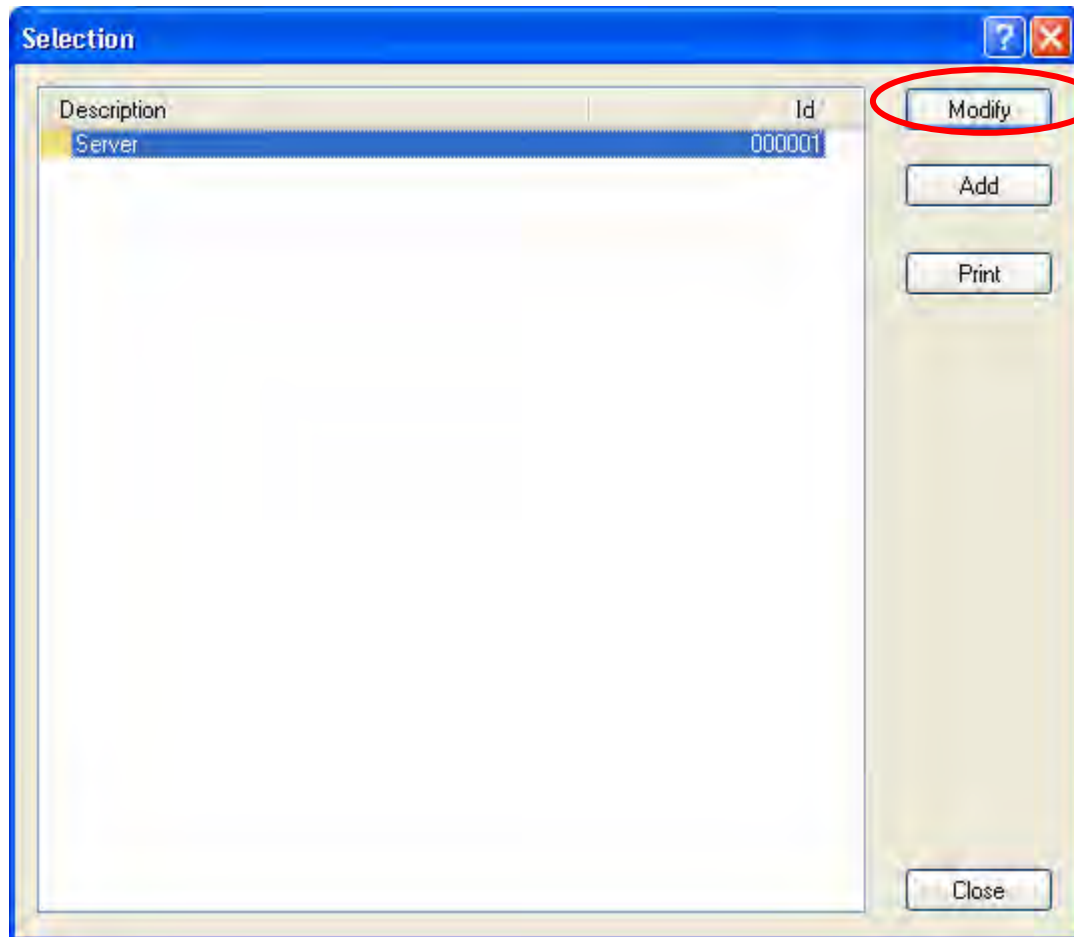




Step 1: Screen Access

Click to continue

Click on MODIFY.





Step 1: Screen Access

Click to continue

Enter a **Description** of the type of employees who will use this screen access.

Select the **Default Floor Plan** for these employees.

Click on a **Revenue Center** used by these employees.

Configuration #1 - Server

Description

Description SERVER

Floor plan Default

Delete OK Cancel Apply

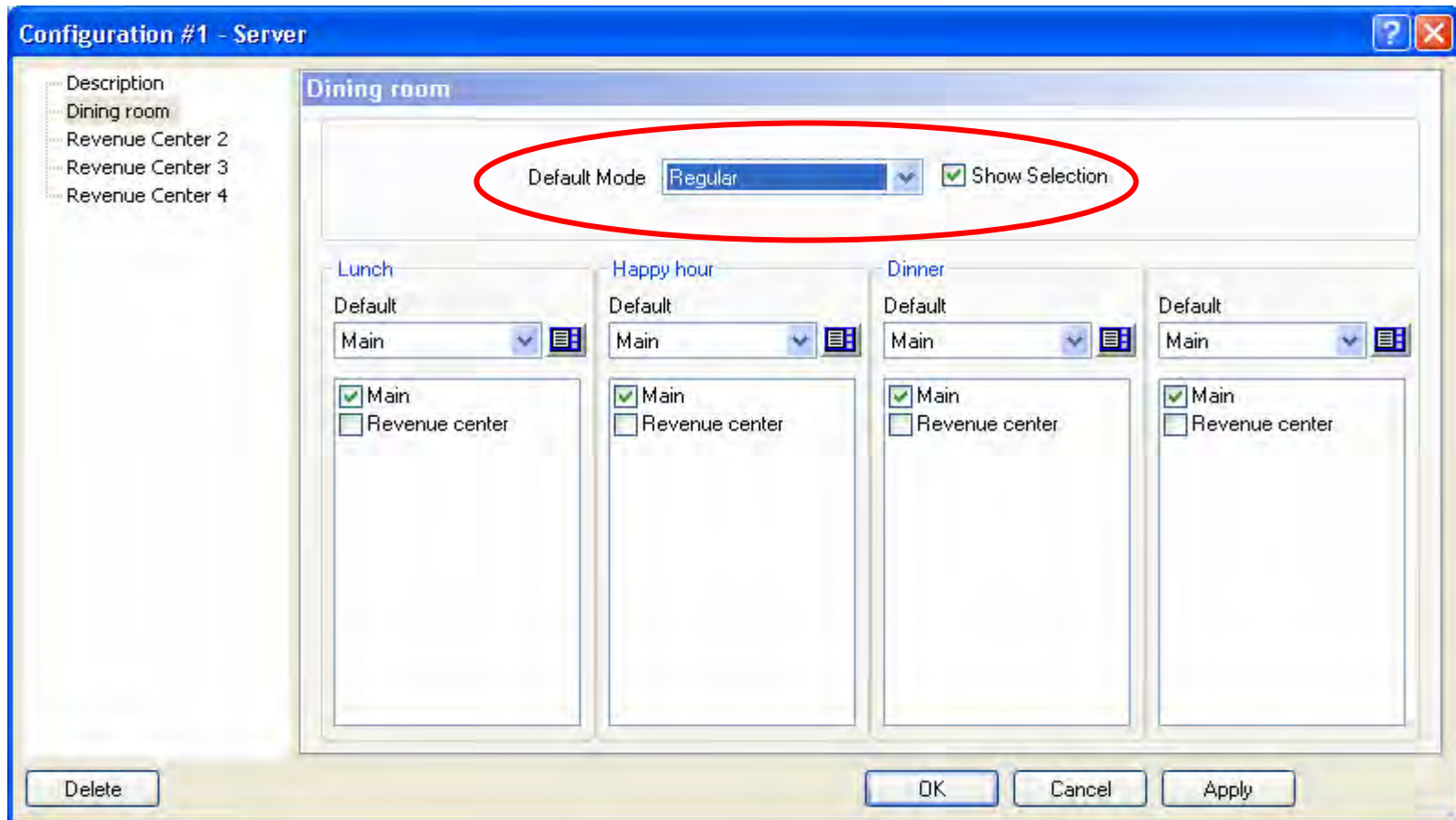


Step 1: Screen Access

Click to continue

You could lock this Screen Access in a Default Mode, but usually, you will let it follow the Regular schedule setup in the workstations' Mode branch

Enable the Show Selection option to give employees access to this revenue center.





Step 1: Screen Access

Click to continue

For each **Mode**, select the **Default Preferential Screen** to display.

For each Mode, also select which **Preferential Screen** will be available using the Preferential button on the workstation.

The screenshot shows the 'Configuration #1 - Server' window. On the left, a tree view lists 'Description', 'Dining room', 'Revenue Center 2', 'Revenue Center 3', and 'Revenue Center 4'. The main area is titled 'Dining room' and contains a 'Default Mode' dropdown set to 'Regular' and a 'Show Selection' checkbox which is checked. Below this are four columns representing different modes: 'Lunch', 'Happy hour', 'Dinner', and 'Default'. Each column has a 'Default' dropdown set to 'Main' and a 'Preferential' button (represented by a list icon). Under each mode, there are two checkboxes: 'Main' (checked) and 'Revenue center' (unchecked). At the bottom of the window are 'Delete', 'OK', 'Cancel', and 'Apply' buttons. Two red arrows point from the text above to the 'Main' dropdown in the 'Lunch' column and the 'Preferential' button in the 'Lunch' column.



Step 1: Screen Access

Click to continue

Repeat this for all **Revenue Centers** used by these employees.

Click on OK.

Configuration #1 - Server

Description

- Dining room
- Revenue Center 2
- Revenue Center 3
- Revenue Center 4

Dining room

Default Mode: Regular Show Selection

Meal Type	Default	Main	Revenue center
Lunch	Main	<input checked="" type="checkbox"/>	<input type="checkbox"/>
Happy hour	Main	<input checked="" type="checkbox"/>	<input type="checkbox"/>
Dinner	Main	<input checked="" type="checkbox"/>	<input type="checkbox"/>
Default	Main	<input checked="" type="checkbox"/>	<input type="checkbox"/>

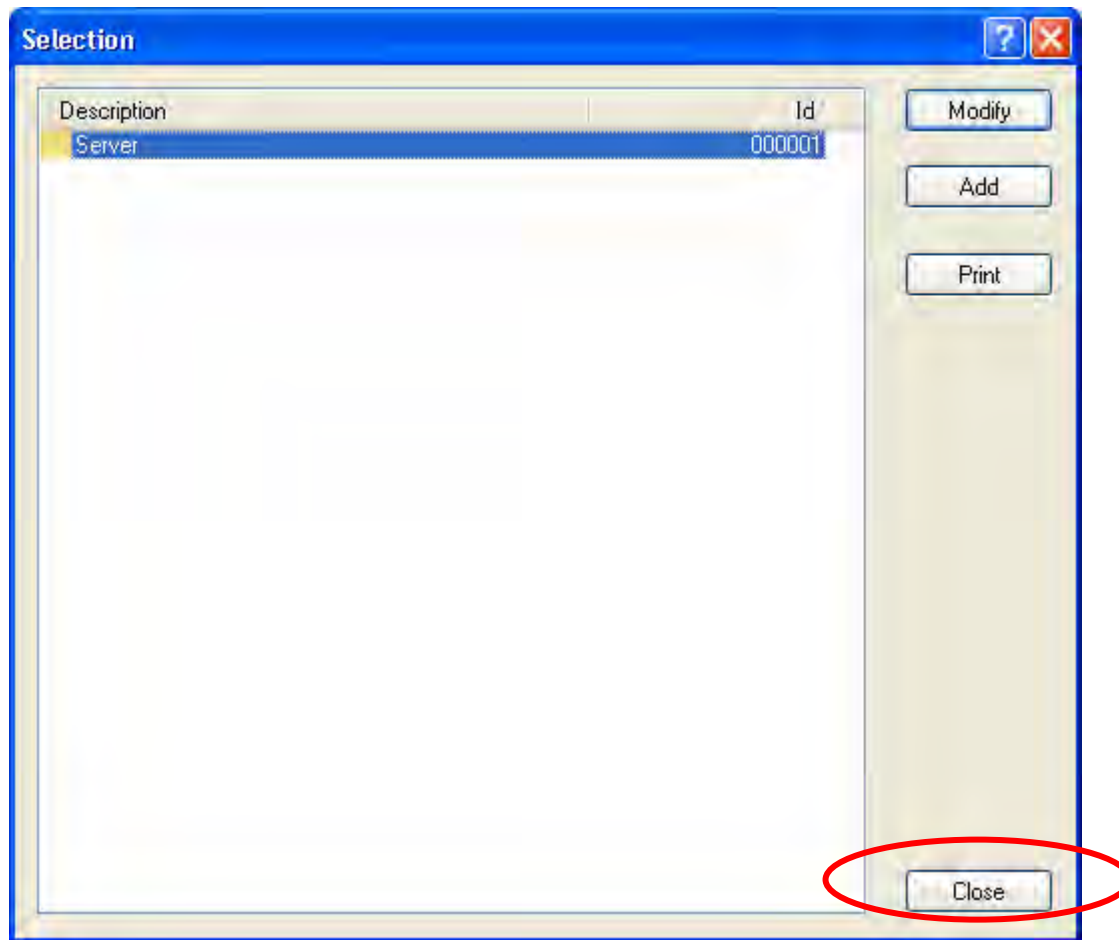
Buttons: Delete, **OK**, Cancel, Apply



Step 1: Screen Access

Click to continue

Click on CLOSE.





This concludes the “Screen Access” presentation.

We hope that this document helped you to understand the steps needed to setup Screen Access in Maitre'D.