







ACCOUNTING INTERFACE
Version 2.9

Introduction

The Profitek Accounting Interface (AI) enables your RSW system to interact with external accounting software. With AI, you are able to export 'General Ledger' and 'Accounts Payable' details to, and also import 'Chart of Account' and 'Vendor' information from, external systems such as Profitek – Dos, Simply Accounting, ACCPAC – Dos, and ACCPAC – Windows.

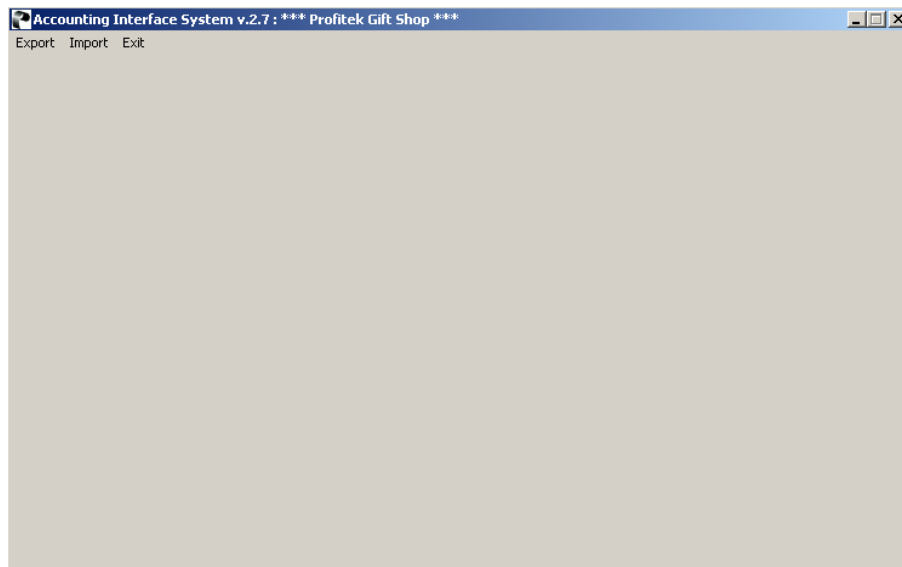
Conventions Used in this Manual

Common Buttons

	Brings up a search list related to the subject beside it
	Brings up a pull down menu for selection
	Accept the settings and proceed to export/import
	Cancel and Exit

Main Menu

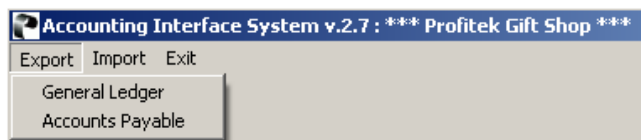
When you first run the Accounting Interface program, the main menu screen will appear:



Here you can access the different functions available for importing and exporting purposes. To access a function, simply click on the header (Export or Import) on the menu bar, and the menu will drop down, revealing the different functions that are available for the particular header. Then proceed to click on the desired function. The remaining sections of this menu will provide you with information on what each function does, and the settings and parameters that control how the function operates.

Export

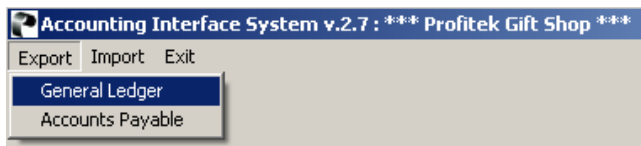
The functions that are available under this menu allow you to export General Ledger or Accounts Payable accounting details from RSW to your accounting software.



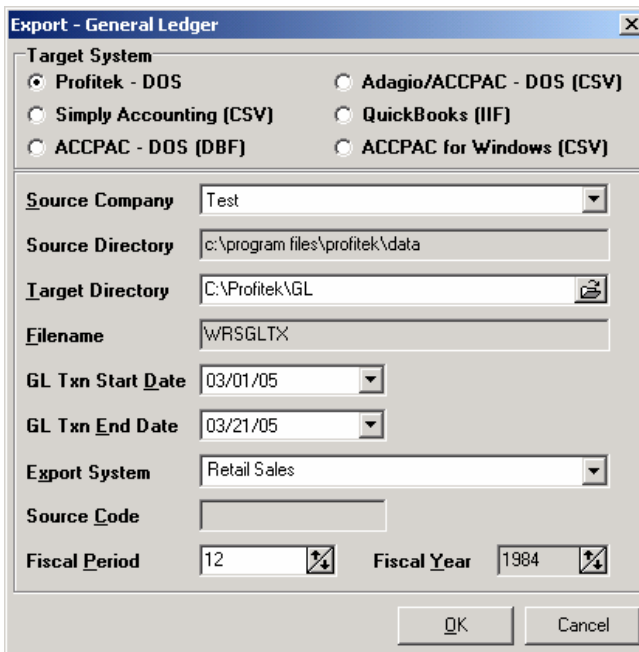
Please note that after EXPORTING from the Accounting Interface, you must perform an IMPORT from your external Accounting software (procedure specific to each particular software).

General Ledger

To export the General Ledger, go to <Export> and then <General Ledger>:



The following screen will appear:



The 'Export - General Ledger' dialog box contains the following fields and options:

- Target System:**
 - Profitek - DOS
 - Adagio/ACCPAC - DOS (CSV)
 - Simply Accounting (CSV)
 - QuickBooks (IIF)
 - ACCPAC - DOS (DBF)
 - ACCPAC for Windows (CSV)
- Source Company:** Test
- Source Directory:** c:\program files\profitek\data
- Target Directory:** C:\Profitek\GL
- Filename:** WRSGLTX
- GL Txn Start Date:** 03/01/05
- GL Txn End Date:** 03/21/05
- Export System:** Retail Sales
- Source Code:** (empty field)
- Fiscal Period:** 12
- Fiscal Year:** 1984

Buttons: OK, Cancel



Target System

Select what type of system you are exporting to. The Accounting Interface can export to the **Profitek – Dos, Simply Accounting, ACCPAC – Dos, ACCPAC – Windows, Adagio, or Quickbooks** systems.

Source Company

Select the source company from which to export accounting details. You will only be able to select different companies if your Profitek RSW system is set up to manage more than one company. Otherwise, the default and only company will be automatically selected.

Source Directory

This is the directory containing all the data files that Accounting Interface is going to process for export. This is automatically set by the system, according to the company you choose.

Target Directory

This is the directory where Accounting Interface is going to export the documents to. So for instance, if you would like Accounting Interface to export directory to the Simply Accounting program, you would input the program's system directory here.

Filename

The filename of the exported file – for Profitek, Adagio and Quickbooks, the file name will be automatically set by the system.

GL Txn. Start/End Date

All GL transactions between the specified Start and End Date will be included in the export file. Once exported, you will not be able to export that date range again.

Export System

Choose the system to export: **Retail Sales** or **Accounts Payable**.

Source Code

You must enter a source code if the accounting system is Simply Accounting, Accpac (DOS) or Adagio. The source code will be used as a reference in the target system, you can use "RS" as the source code.

Fiscal Period

For Accpac and Adagio system, you must enter the fiscal period that the journal belongs to.

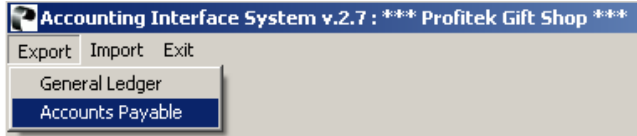
Fiscal Year

For Accpac for Windows, you must enter the fiscal year that the journal belongs to.

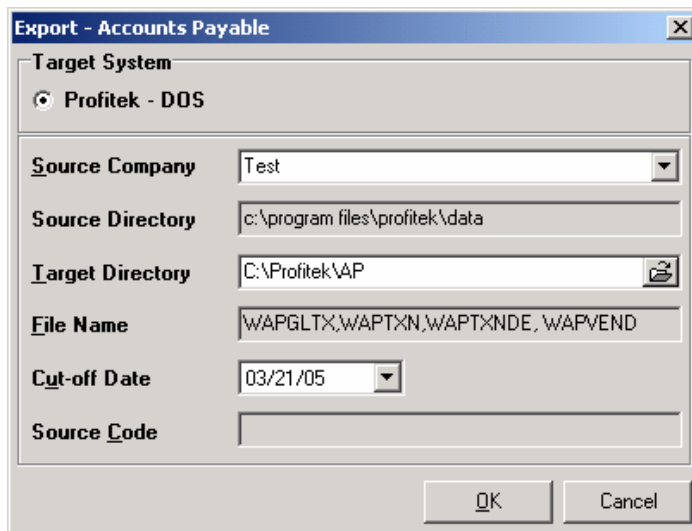
After specifying all settings, press <OK> to begin exporting the General Ledger.

Accounts Payable

To export accounting details from Accounts Payable, go to <Export> and then <Accounts Payable>:



The following screen will appear:



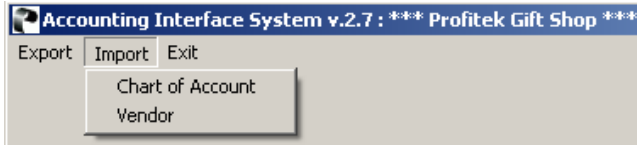
This menu is very similar to the Export General Ledger menu. The settings are exactly the same with the exception of:

Cut-off Date

Specify the cut-off date. All transactions on and before this cut-off date will be included in the export.

Import

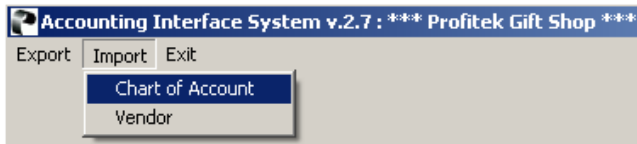
The functions that are available from this menu allow you to import Chart of Accounts and Vendor information from different sources:



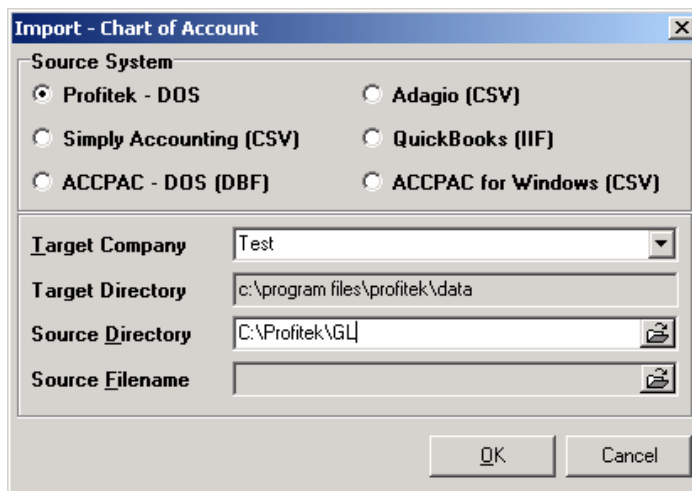
You can only import Chart of Account or Vendor information from files that have been EXPORTed by your external Accounting Software. This must be done first and exported to the file format specified on the screen.

Chart of Account

To import a Chart of Account, go to <Import> and then <Chart of Account>:



The following screen will appear:



Source System

Choose the system that you are importing the Chart of Account from. Select from Profitek – Dos, Simply Accounting, ACCPAC – Dos, Adagio, Quickbooks or ACCPAC – Window.

Target Company

For multiple companies, select the company to import to.

Target Directory

The directory to import the files to. This is automatically set by AI according to the Target Company you choose.

Source Directory

For Profitek DOS system, specify where the original files can be found for import. For the other system, specify the Source File Name instead.

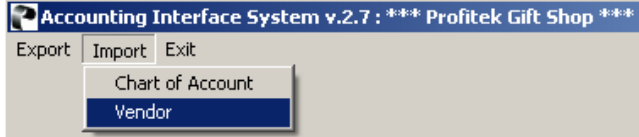
Source File Name

The file name of the file to be imported. This needs to be specified when importing from Source System other than Profitek DOS.

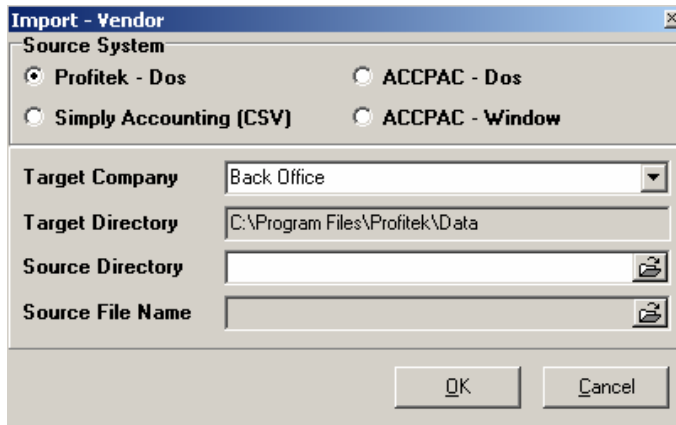
This will replace the existing Chart of Accounts in the RSW System. If you have changed accounts' numbers, you will need to update the appropriate GL codes in RSW.

Vendor

If you want to import vendors from an external source, go to <Import> and then <Vendor>:



The following screen will appear:



This menu functions exactly the same way as importing a Chart of Accounts. Please refer to the previous section for descriptions of each parameter.