

# Host Control v2.6 for Windows

---

## HCR

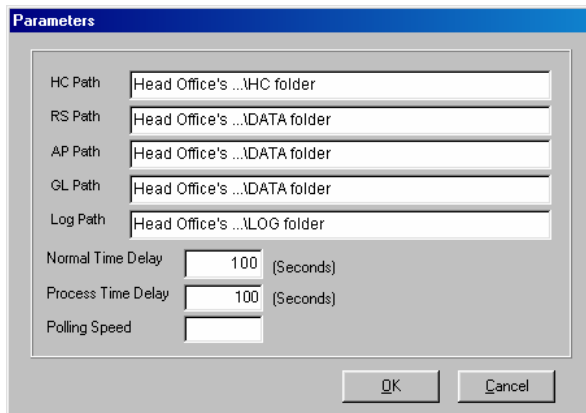
### Setting up HO:

- The HCR.EXE is only installed on HO system
- HO system must have the HO EXE files at ...\\HC folder plus the store EXE files at ...\\HCTEMP folder

### Setting up HO:

- Store system must have the store EXE files at ...\\HCTEMP folder

## Housekeeping – Parameter Setup



HC Path = Drive:\\Progra~1\\Profitek\\HC

AP Path, GL Path, RS Path =  
Drive:\\Progra~1\\Profitek\\DATA \*

Log Path =  
Drive:\\Progra~1\\Profitek\\LOG

**Note: Must use short file name in parameters setup.**

All stores' items, chart of accounts, and vendors will be centralized based on item information in this \\DATA folder if centralize/synchronize checkboxes are enabled.

\*\*\* All these paths refer to paths in the Head Office's system.

### Normal Time Delay:

Time delay in seconds for the polling process to pause after each Zip request to allow sufficient time for the compression operation to finish

### Process Time Delay:

Time delay in seconds for the polling process to pause after each Centralize Item request to allow sufficient time for the store items to be updated

### Warning: Setting up \\HCTEMP folder for RSW Training

When you are setting up Training RSW, make sure you create a separate TEMP folder for HC training e.g. Drive:\\Progra~1\\Profitek\\HCTempTrain

Use this temp folder when setting up the Training Company's HC module in Back Office -> Maintain Company so that the training sales/stock data will not be posted to the default \\HCTEMP folder.

## Enter/Modify Store:

For Head Office:

Enter / Modify Store

Store No.	Store Name	GL Dept Code
000	HEAD OFFICE	

Phone Name	Sequence	Polling	Head Office	Last Polling Date	Type
	0	<input type="checkbox"/>	<input checked="" type="checkbox"/>	20011009	

Path in H.O.

AP Path	
GL Path	
PO Path	
RS Path	

Path in Store

HC Working Path	HO's ... \HCTEMP folder
Log Path	HO's ... \LOG folder
AP Path	
GL Path	
PO Path	
RS Path	

Centralize GL: No

Centralize AP: No

Centralize AR: No

Centralize Item: No

Options for Centralize Item ...

Centralize Vendor	<input type="checkbox"/>
Centralize Customer	<input type="checkbox"/>
Inter-store Transfer	<input type="checkbox"/>
Download Lookup Inventory	<input type="checkbox"/>
Download P.O.	<input type="checkbox"/>
Upload Sales	<input checked="" type="checkbox"/>
Upload Inventory	<input checked="" type="checkbox"/>
Upload Bar Codes	<input type="checkbox"/>
Upload New Item From Store	<input type="checkbox"/>
Upload P.O.	<input type="checkbox"/>
Update Sales Data to Image Files	<input type="checkbox"/>
Upload Complete Image	<input type="checkbox"/>

OK Cancel

\*Irrelevant edit and check boxes are all disabled.

HC Path in Store = Drive:\PROGRA~1\PROFITEK\HCTEMP (**must be the HCTEMP folder**)

- Head office system must have a \HC and a \HCTEMP folder
- Centralize GL, AP, AR, and Items are all disabled for H.O. and all disabled
- All checkboxes for H.O. are disabled except: Centralize Vendor, Inter-store transfer, Upload Sales, Upload Inventory, and Download Lookup Inventory. Download P.O.
- Stores' sales and inventory lookup are uploaded to H.O.'s HCTEMP

# Host Control v2.6 for Windows

For Stores:

**Enter / Modify Store**

Store No.	Store Name	GL Dept Code			
001	U127				
Phone Name	Sequence	Polling	Head Office	Last Polling Date	Type
001	1	<input checked="" type="checkbox"/>	<input type="checkbox"/>		

**Path in H.O.**

AP Path	Separate data path in HO to hold
GL Path	store data when uploaded to HO
PO Path	...
RS Path	...

**Path in Store**

HC Working Path	Store's own local ... \HCTEMP folder
Log Path	Store's own local ... \LOG folder
AP Path	Store's own local ... \DATA folder
GL Path	Store's own local ... \DATA folder
PO Path	Store's own local ... \DATA folder
RS Path	Store's own local ... \DATA folder

**Centralize Options**

Centralize GL	Centralize
Centralize AP	Centralize
Centralize AR	Centralize
Centralize Item	Update Store Item

**Options for Centralize Item ...**

Centralize Vendor	<input type="checkbox"/>
Centralize Customer	<input type="checkbox"/>
Inter-store Transfer	<input checked="" type="checkbox"/>
Download Lookup Inventory	<input type="checkbox"/>
Download P.O.	<input type="checkbox"/>
Upload Sales	<input checked="" type="checkbox"/>
Upload Inventory	<input checked="" type="checkbox"/>
Upload Bar Codes	<input type="checkbox"/>
Upload New Item From Store	<input type="checkbox"/>
Upload P.O.	<input type="checkbox"/>
Update Sales Data to Image Files	<input type="checkbox"/>
Upload Complete Image	<input type="checkbox"/>

OK Cancel

**Path in HO: AP Path, GL Path, PO Path, and RS Path**  
These paths are only relevant if the store's accounting or Complete Polling is enabled. In that case, the Head office's system must contain a separate data folder, which houses information uploaded from this store. Enter the separate data folder's paths in these four places. You need one data folder for each individual store.  
The head office system will contain one data folder for it's own data and one data folder for each store.

**Path in Store:**  
HC Working Path = Store's own local HCTEMP folder i.e.  
Drive:\PROGRA~1\PROFITEK\HCTEMP

AP Path, GL Path, PO Path, and RS Path  
= Store's own local data path e.g.  
Drive:\PROGRA~1\PROFITEK\DATA

Log Path = Store's own local LOG folder i.e.  
Drive:\PROGRA~1\PROFITEK\LOG

## Host Control v2.6 for Windows

---

- Store system must have a \HCTEMP folder (\HC folder is not required)
- HSLOGxxxx.00? is a text log file that stores all centralized item information.

## Host Control v2.6 for Windows

---

- Store Name** ➤ Name of the store for reference only
- GL Dept Code** ➤ If your GL has enabled multi-department, enter the department code of this store. When HO creates new subcategories, which are synchronized to stores, these store subcategories will assume this department code and the same GL account code as the HO.  
For example, account 000-5000 in HO will become 001-5000 when store 001 is updated if this code is set to 001.
- Phone Name** ➤ Enter the name of the pcAnywhere Remote Control icon for this store connection. The property of the RC icon controls whether this is a modem or ADSL connection.  
\*\*\* For modem connection \*\*\*  
pcAnywhere file transfer works best at 19200 baud connection speed. Some sites can go up to 38400 baud while some other sites might only handle 9600 baud. Start with baud rate 38400 and work your way down. If there is problem making connection or transferring files during polling, drop the baud rate one notch down and re-try. DO NOT set this baud rate higher than 38400 because the chance making successful pcAnywhere connection is very low based on past experience.
- If the store has enabled pcAnywhere caller security, make sure you set up the RC icon to automatically login to host
- Leave this empty if HO and store databases are on the same physical network. In this case, only the head office is required to have pcAnywhere, while the stores don't. Files are just copied from one folder to another instead of being transferred through pcAnywhere.
- Sequence** ➤ This number controls the polling order of stores. Each store or head office should have a different sequence number although it is possible to set two or more stores to have the same sequence number. When sequence number duplicates, the polling sequence of these stores will be determined by the record order.
- Polling** ➤ Poll or not poll this store
- Head Office** ➤ Signifies if this is Head Office
- Last Polling Date** ➤ Displays the date of the last successful polling. When centralize item, the system will only download the items that's been modified on or after the last polling date.
- Type** ➤ This is for grouping different stores into a type. E.g. you can group stores by region.

**Inter-store transfer:**

## Host Control v2.6 for Windows

---

This option must be turned on if stores do transfer stock among them and you want polling to handle stock transfer automatically.

### **Download Lookup Inventory:**

Turning this feature on will allow stores to lookup other stores' inventory through the item search function

### **Download PO:**

Turning this feature on will allow stores to receive stock based on P.O.s created in H.O.

### **Upload Sales:**

Turning this feature on will allow Host Control in H.O. to print individual/consolidated store sales

### **Upload Inventory:**

Turning this feature on will allow Host Control in H.O. to print individual/consolidated store Inventory Valuation report

### **Upload Barcodes:**

If inter-store transfer is turned on, this feature should also be turned on so that barcodes generated from new stock received at stores will be uploaded to H.O. Then these barcodes will be copied to other stores. System-generated barcodes for size items are sequential e.g. 0000000001, 0000000002, ...etc. but are always unique for each store because the first 3 digits of the barcodes always represent the store number e.g. store 01 will generate barcodes 0100000001, 0100000002, ... etc. These barcodes generated by stores will be uploaded to HO because they have to be downloaded to other stores for the sake of inter-store transfer. When item with barcode 010000001 is transferred to store 02, if the barcode is not downloaded to store 02, it will not be able to scan the item.

### **Upload new item from store:**

Turn this feature on if you want new items, which are created in stores, to be copied to H.O.

### **Upload PO:**

This feature allows H.O. to be able to receive stock based on P.O.s created from stores once then are uploaded

### **Update Sales Data to Image File:**

This feature is used together with the "Upload Complete Image" option. If you want to keep a complete store image in the H.O. but you don't want polling to transfer the entire image everyday through polling, you

## Host Control v2.6 for Windows

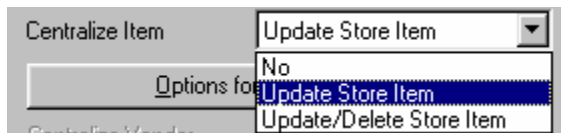
---

can turn off the “Upload Complete Image” and turn this on so that the Stores’ daily sales data will be updated to the H.O. image. Then you can turn on “Upload Complete Image” once or week or as often as you wish. Note: You must successfully poll a store “Complete Image” at least once before using this feature.

### **Upload Complete Image:**

Turn this feature on to copy (upload) entire set of data files from store to H.O. You must create a separate DATA folder in H.O. to house

### **Centralize Item:**



### **Update Store Item:**

When this option is selected, stores’ item databases will be updated based on selections in “Options for Centralize item” (see explanation below)

### **Update/Delete Store Item:**

When this option is selected, stores’ item databases will be updated based on selections in “Options for Centralize item” (see explanation below) plus any items that exist in stores but not in HO will be erased from the stores provided the items don’t have On-Hand stock. If this option is selected, “Upload New Item from store” option will be disabled.

## Options for Centralize Item:

Update Options	
Special Price Items	<input type="checkbox"/>
Quantity Price Break	<input checked="" type="checkbox"/>
Minimum Stock	<input type="checkbox"/>
Stock Cost	<input checked="" type="checkbox"/>
Vendor	<input checked="" type="checkbox"/>
Tax 1	<input type="checkbox"/>
Tax 2	<input type="checkbox"/>
Tax 3	<input type="checkbox"/>
Tax 4	<input type="checkbox"/>
Tax 5	<input type="checkbox"/>
Discountable	<input type="checkbox"/>
Price 0	<input checked="" type="checkbox"/>
Price 1	<input checked="" type="checkbox"/>
Price 2	<input checked="" type="checkbox"/>
Price 3	<input checked="" type="checkbox"/>
Price 4	<input checked="" type="checkbox"/>
Price 5	<input checked="" type="checkbox"/>
Price 6	<input checked="" type="checkbox"/>
Price 7	<input checked="" type="checkbox"/>
Price 8	<input checked="" type="checkbox"/>
Minimum Price	<input checked="" type="checkbox"/>
Ignore Zero Cost/Price (Applicable for Price 0 - 8 Only)	<input type="checkbox"/>
Update Store's Active Item Only	<input type="checkbox"/>
Download Head Office's Active Item Only	<input type="checkbox"/>

When selections are checked, information will be copied (centralized) from HO to stores.

### Ignore Zero Cost/Price:

If checked, item prices that are zero in HO will not be copied to stores. This is useful when different stores have different selling prices. Enable this checkbox so that store prices will not be overwritten by polling.

# Host Control v2.6 for Windows

---

## pcAnywhere Setup

**Warning :** *DON'T USE pcAnywhere version 9.0.  
Use v8.x or v9.x (except 9.0) or 10.x.  
pcAnywhere v9.0 has a bug in transferring files, which causes the  
Head Office Host Control to fail.  
You must run live update after each fresh install of pcAnywhere v9.2  
to fix a "Class not registered" bug in file transfer mode.*

Please change the following pcAnywhere settings as well:

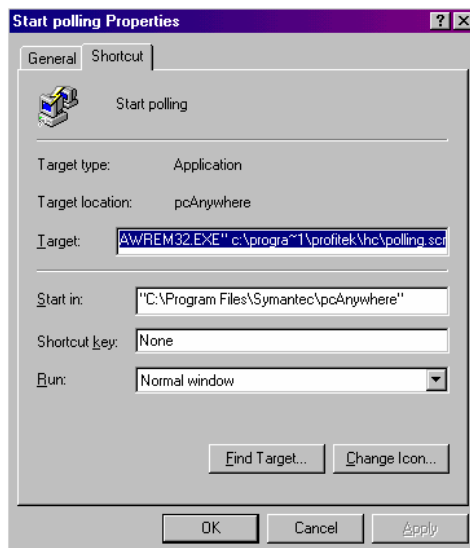
Under Menu "Tools -> Options"

1. Host Operation. Set "Video mode selection" parameter to compatibility
2. File Transfer. UNCHECK "pause remote control to maximize file transfer performance."

Set up icon in HO using pcAnywhere version 8.x or 9.x:



Start polling



Target = "c:\pcaPath\AWREM32.EXE"  
C:\PROGRA~1\PROFITEK\HC\POLLING.SCR

### **Suggested method to Start Polling:**

Turn on "Immediate Polling" when generating script and schedule icon to run through Windows Task Scheduler.

### **Setting up Task in Win2000 Task Scheduler:**

If you login using one username to add the task but the computer is logged in as a different user at the scheduled time, the task will not run.

Set up icon in HO using pcAnywhere version 10.x:

Target = "c:\program files\profitek\hc\HCRHPOLL.exe"  
C:\PROGRA~1\PROFITEK\HC\POLLING.POL

# Host Control v2.6 for Windows

---

## Troubleshooting:

**Symptom:** (v9.2) **File transfer box doesn't display even after live update**  
**pcAnywhere file manager flashes and disappears when launched**

## Solution:

Refer to Symantec site:

*<http://service1.symantec.com/SUPPORT/pca.nsf/e1aefd06d28fcec6852569e5004cef32/553ea36b2d13311f8825679200588e35?>*

## Situation:

You launch the file manager from a pcAnywhere remote connected to any host. The "Loading file transfer" message flashes on the screen and disappears. This happens with all hosts you connect to.

## Register the modules

pcAnywhere 9.0 and 10.0 use the Microsoft DCOM (Distributed Component Object Module) for management features (including file transfers). During installation, pcAnywhere registers three COM objects. If these objects did not register on the remote, you will see the "Loading file transfer" window flash briefly on the screen every time you launch the file manager. This occurs whether the file transfer is initiated in session, through auto transfer, or through scripts.

## To manually register the modules (all supported operating systems):

Execute the following command lines, one at a time:

```
regsvr32 "c:\program files\symantec\pcanywhere\ftstatus.dll"  
regsvr32 "c:\program files\symantec\pcanywhere\awxfer.dll"  
regsvr32 "c:\program files\symantec\pcanywhere\awxferui.dll"
```